



**Ideal Ville Landscaping**

# Statement of Competence

“The proof is in the pudding”



Established: **2019**

Incorporation: **Limited Liability**

Industry: **External works, Outdoor living, Landscaping**

Delivery route: **Design 'n Build, Sub Contract, etc.**

Bifro House, Sir Apollo Kaggwa Rd.

+256 704073510

idealvillelandscaping@gmail.com

[our LinkedIn](#)



# IDEAL

IDEAL

IDEAL

# Table of Contents

**Introductions**

**Regional Footprint**

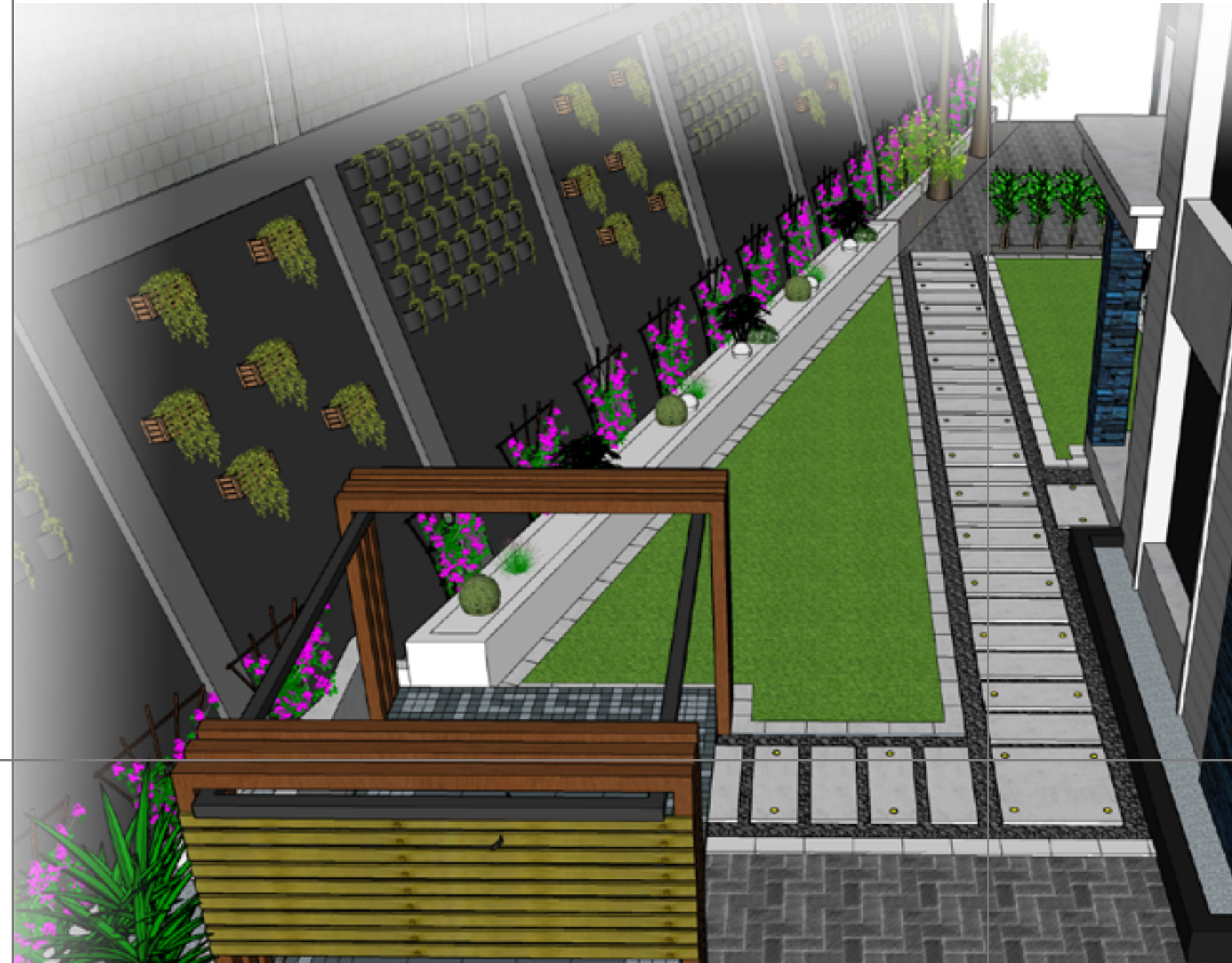
**Portfolio**

Selected Projects

In the pipeline

**Industrial Design**

**Partnerships**



# Foreword

In the dynamic world of design, every project tells a unique story, and I am the storyteller. For the past five years, I've immersed myself in the art of landscaping and external works engineering as a whole. My journey has been a blend of creativity, strategy, and a relentless pursuit of perfection.

Today, we are driven by the concept of spatial design adopted from renowned architectural firm; Foster & Partners™. This is also known as the inside-out approach. It helps us design our landscape starting from the interior design concept and the general building design and facade and then moving outside to the external works with the same mood. Every feature, be it, swimming pools, outdoor sheds, pavements and pathways, soft landscaping need to speak a similar mood to the interior and exterior while incorporating futurism and avant-garde.

Through this profile, I invite you to join us on a journey through some of our favorite creations. Each piece is a testament to our commitment to excellence and our passion for design and engineering.

**Beren Katusiime**  
Co-Director & Spatial Design Planner

*Katusiime*

**5** IDEALVILLE  
YEARS



# Expertise

IVL



## Industrial Design

We have partnered with various leading industry artisans and manufacturers to produce custom and unique products. The landscape field is heavily filled with off the shelf cliché products. All the way from concrete products to ornaments and fixtures. We have delved into industrial design with hope to produce these products at a reasonable scale. We use the latest technologies in 3d modelling to generate these designs and use the latest design codes for structural aspects of the designs. These products include, recessed manhole covers, easy to assemble patios, pergolas & awnings, steel furniture, fiber glass artworks among many others. This industrial design is also consistent with our move to diversify in expertise.

## Landscape & external works design.

Our landscape expertise has come a long way. From basic landscape features like driveways and lawns to recreational features like swimming pools, outdoor shades to engineering features like living walls, erosion control, MSE walls and green walls. This means we're not only affiliated with landscapers but also civil/structural engineers.

## Consultancy

"Design-and-build" has been by far our most common procurement/project delivery route. However, we do offer services in consultancy in various aspects of outdoor living and external works for residential, retail and mixed use properties.

## Guiding Tenets

**Innovation:** If it's not cutting-edge, it's boring. As it turns out, AI isn't really the nemesis of designers. We've indulged it in our works and are always on the look-out for the next big thing in technology.

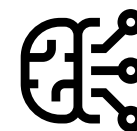
**Strategy:** bring impartial insight and clarity to develop effective strategies, solve problems and overcome challenges, creating distinctive and impactful work that delivers a commercial difference.

**Collaboration:** We build lasting and liberating partnerships with our clients and people and professional network.

**Sustainability:**  
We help our clients and people make long-term impact.

**Commitment:**  
We get closer to our clients and people on a daily basis.

“ We use the latest technologies in 3d modelling ”



Innovation



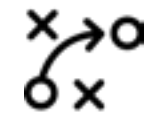
Commitment



Sustainability



Collaboration



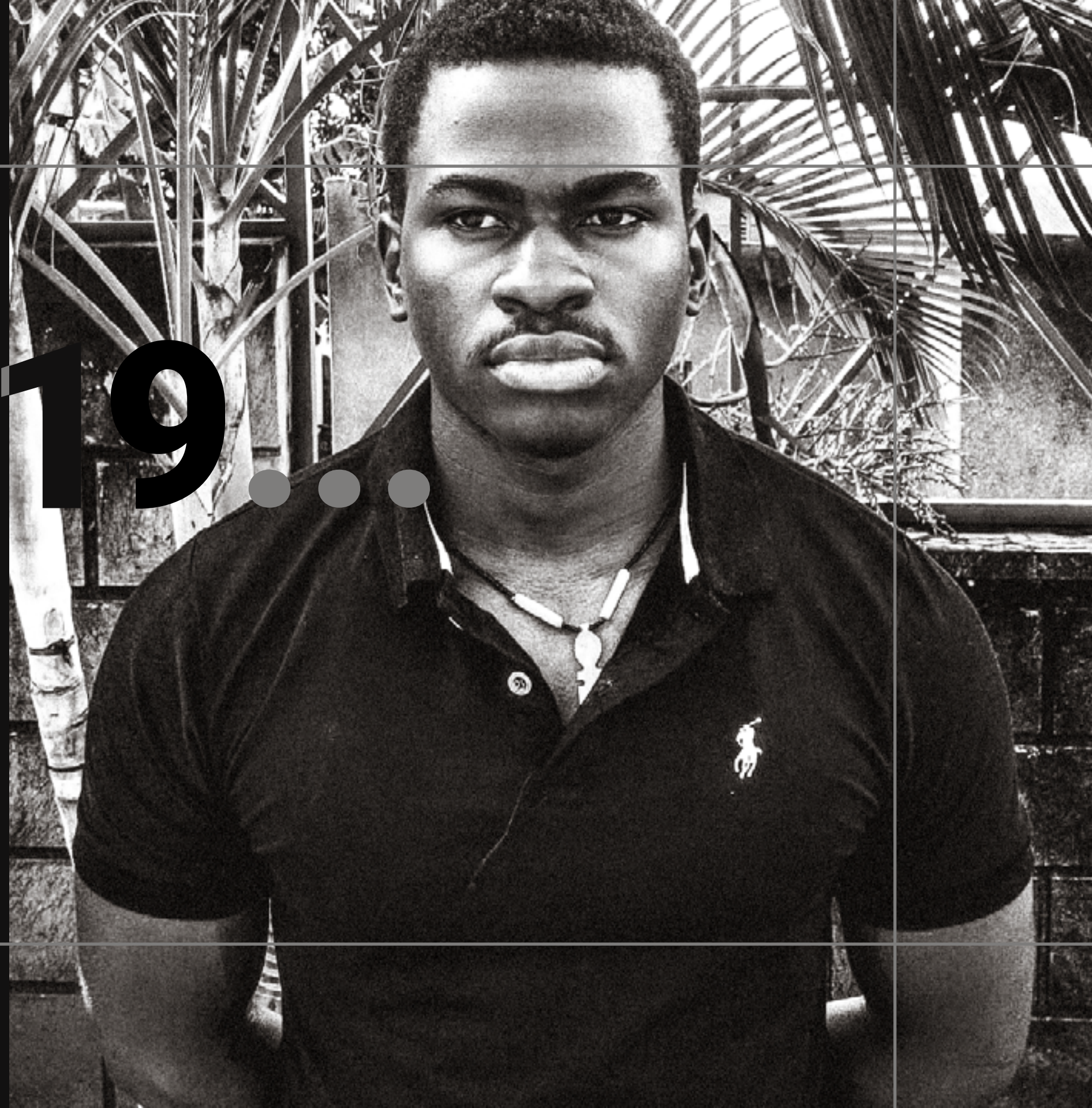
Strategy

# Back in 2019...

During our industrial training in Quantity Surveying at Roko Construction on their site at Mulago cancer institute; we were inspired by a landscaping subcontractor's creativity and execution finesse. Their work sparked our passion for landscape design. Combining our technical expertise with this passion, we founded our landscape company. The rest is history.

Today, we are at a crossroads to diversify our scope of expertise. We are committed to excellence and look forward to transforming spaces for our clients.

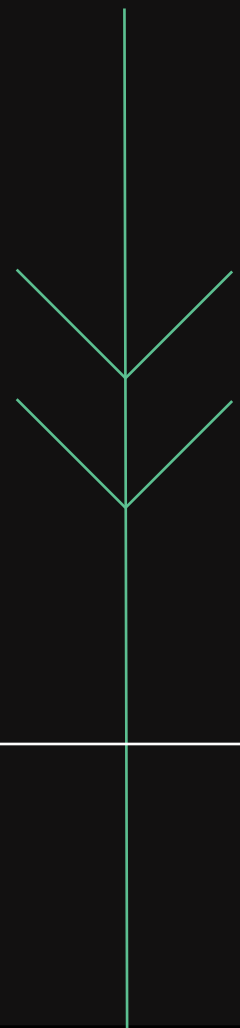
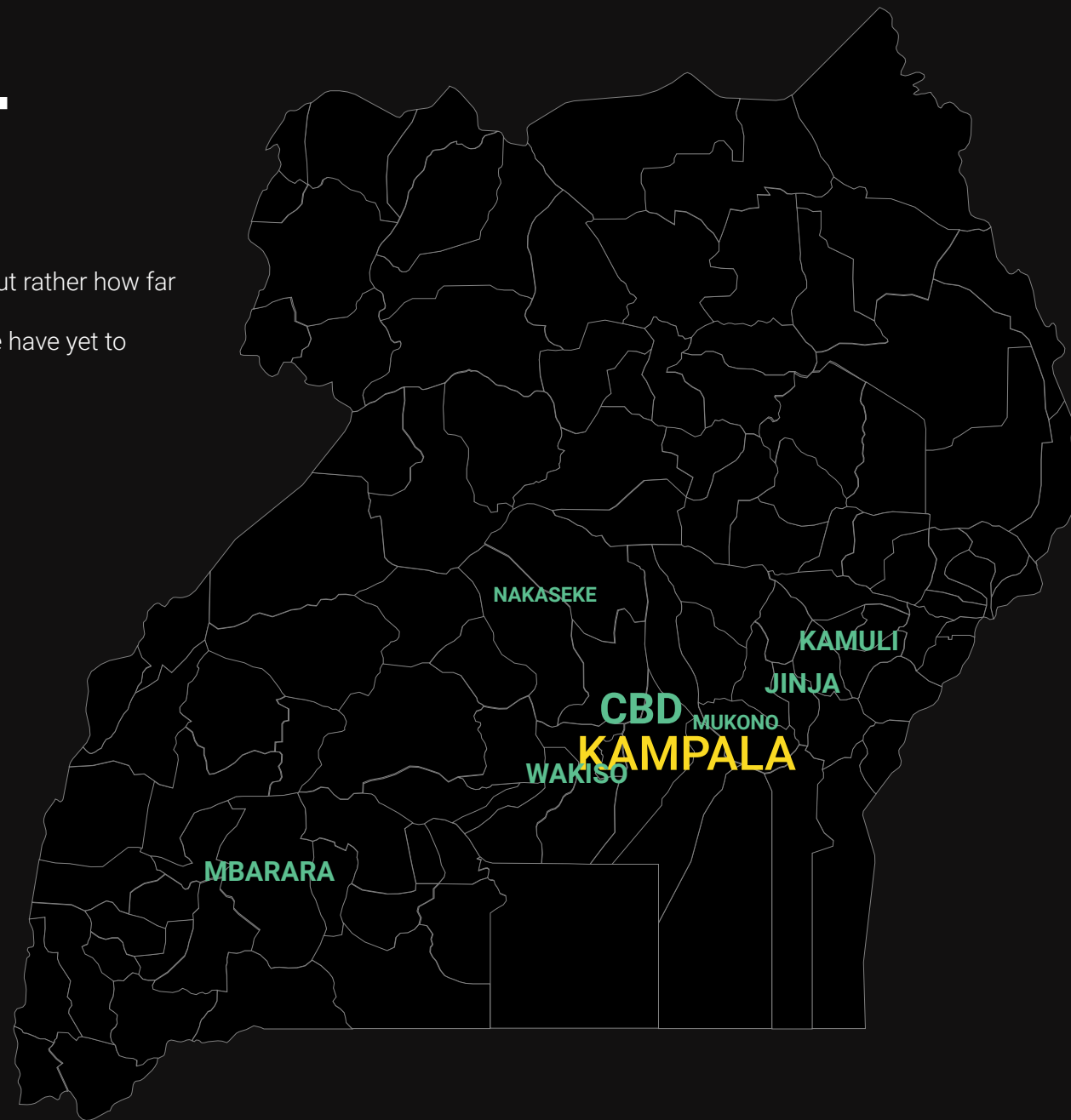
David Andrew Kigenyi  
Co-director & Project manager





# OUR COUNTRY WIDE FOOTPRINT

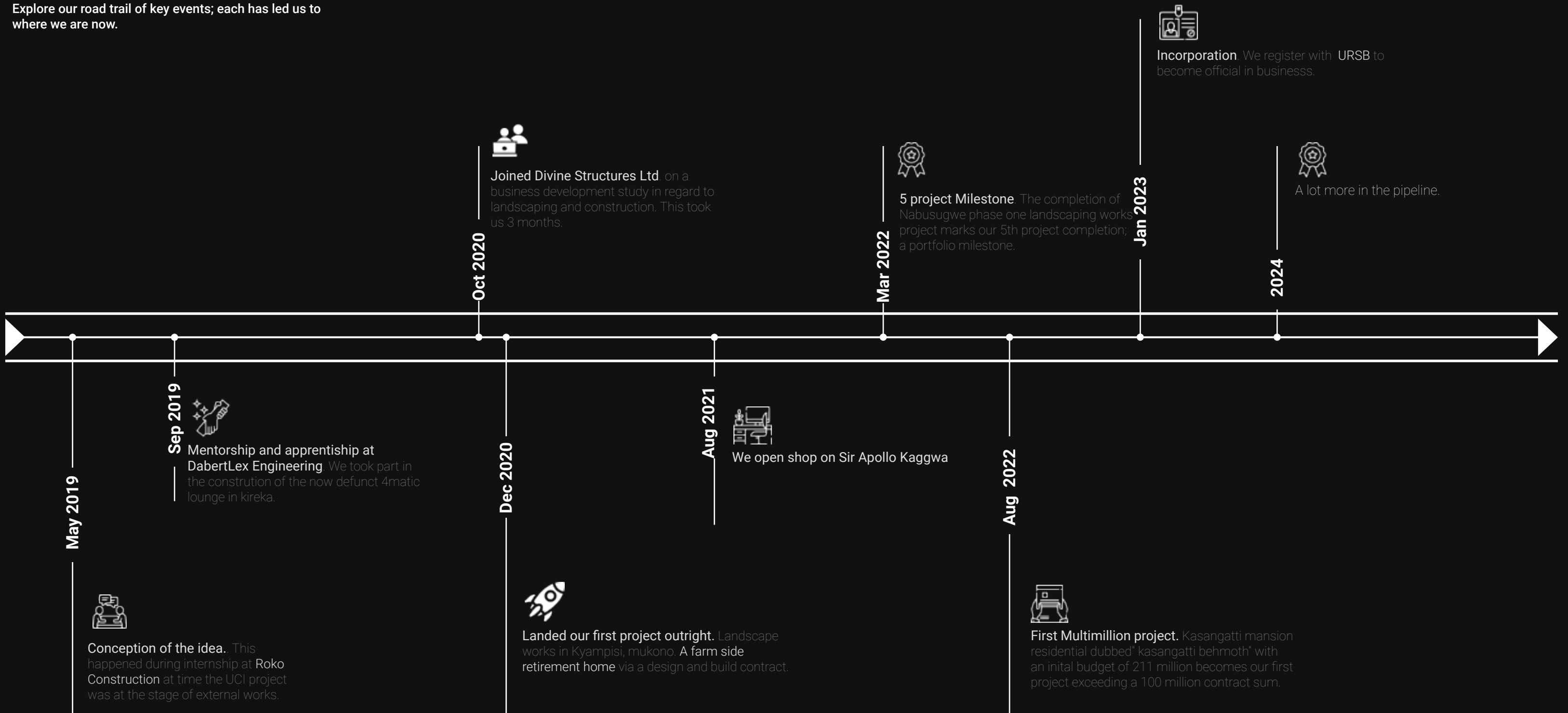
This does not represent our geographical limits, but rather how far our presence has extended within the country. We've had quite some activity in the metro and we have yet to cover other regions with our modern designs.



# Our Tranjectory



Explore our road trail of key events; each has led us to where we are now.





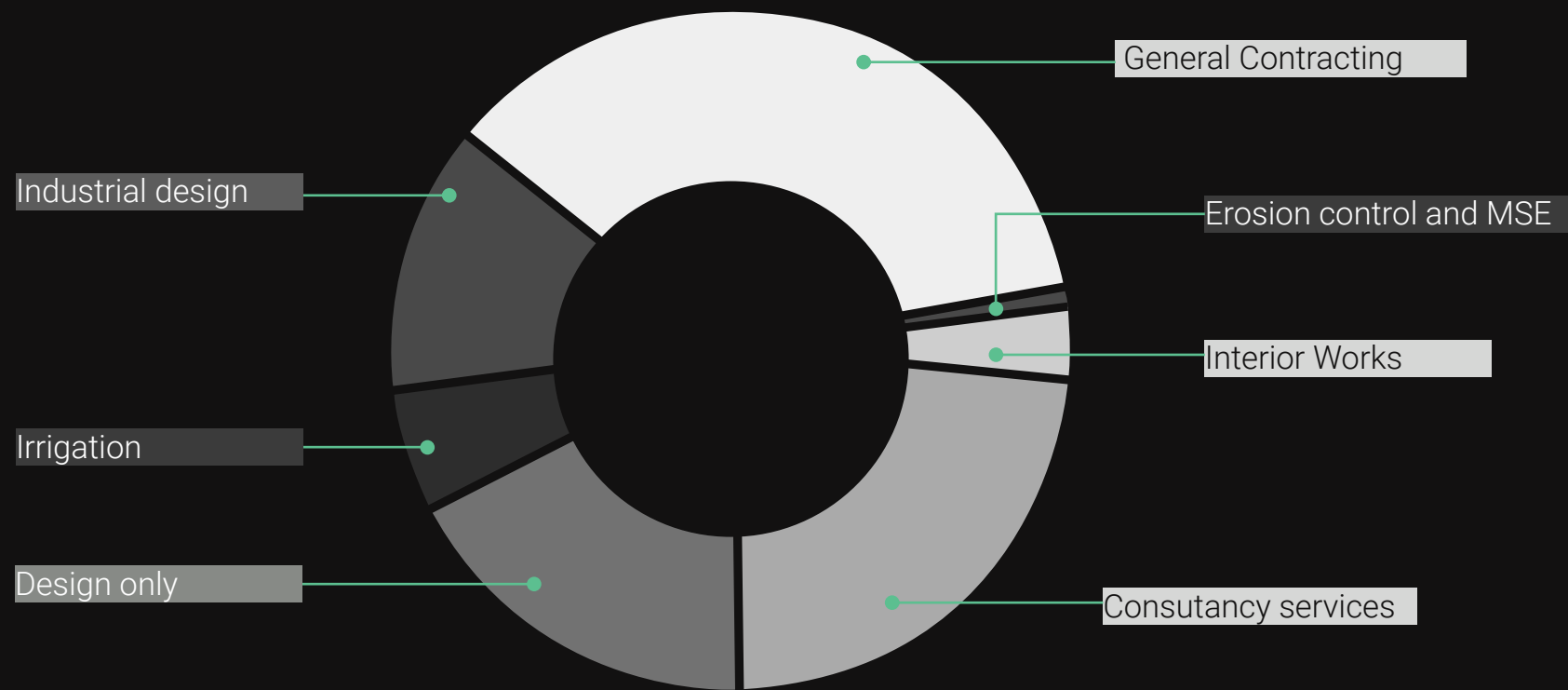
# Expertise Diversification



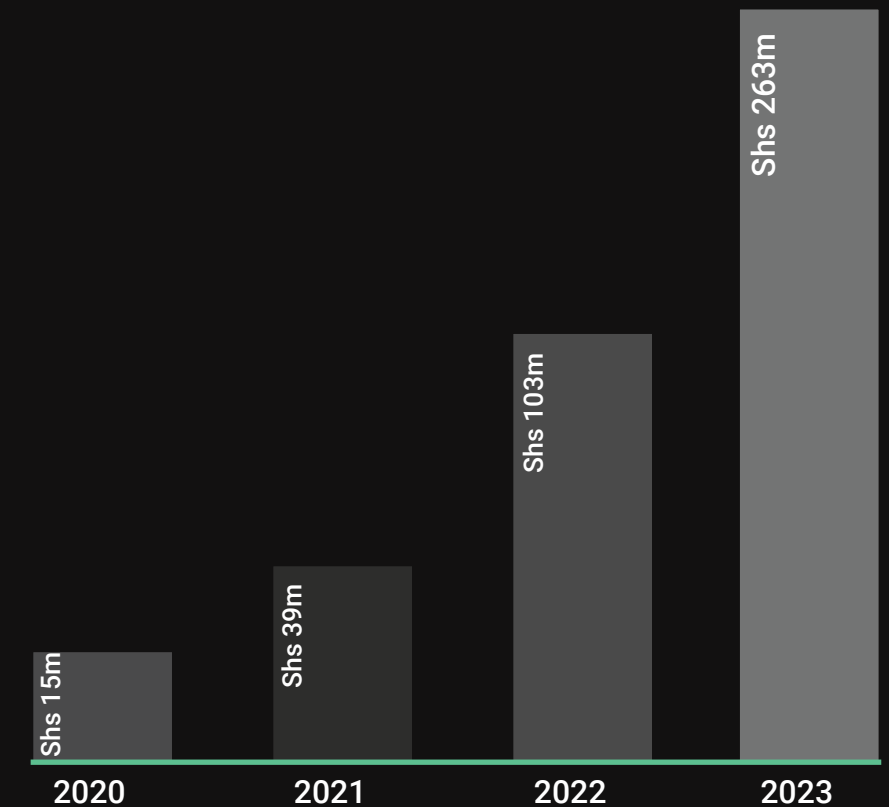
Sustainable growth and ongoing stability in varying expertise

We've had a decent track record with getting associated and partnering with prominent industry companies. These include Class A2 contractors as per the UNABSEC local contractors classification. Because of such relations, we've had a vast exposure to various tasks around external works expertise which is much broader than just landscaping.

## Workbook from 14 Projects



## Projects Turnover



\*Turnover is for the year of 2023. Workbook includes consultancy and the total value of work under secured contracts as at [Q4 2023] including assumed Contract value on Construction Management projects. All values are in Uganda Shillings.

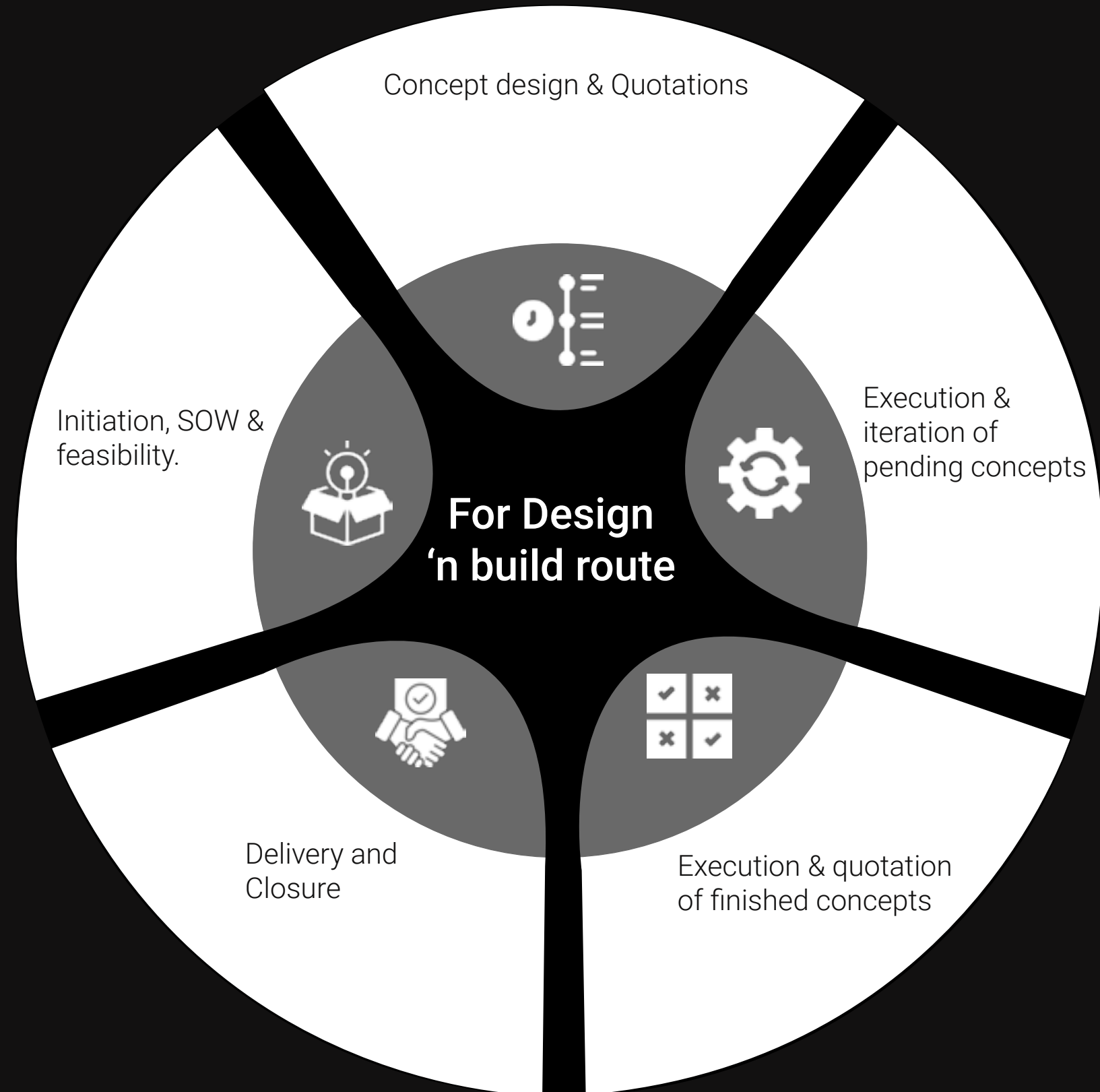
# Plan of work Framework



The construction industry has many standardized work plans. One famous one in Uganda is the RIBA Plan of Work Overview, which excels at the traditional project delivery route where designs are produced by the client and given to that contractor to execute. Because our most popular route is the design and build, it makes some things slightly different.

Contrary to RIBA, we have developed a simple one for our most popular project delivery route; the design and build. This framework breaks down the project management process into a fivefold of key phases to ensure smooth execution and successful delivery of landscaping projects.

By adhering to this structured framework, we can ensure a smooth workflow, high-quality deliverables, and client satisfaction. The framework not only helps in managing time and resources effectively but also fosters a collaborative environment where client feedback is actively incorporated, leading to more refined and successful outcomes.



# Our Timeless Appeal Challenge/Philosophy

Designing landscapes for timeless appeal is challenging and requires careful consideration to ensure long-term relevance and attractiveness. Here are the biggest challenges in achieving timeless landscape design:

**Plant Selection and Layout:** Choosing the right plants is crucial for creating a landscape that remains beautiful and sustainable over time. Plants that are trendy today may not be suitable for future climate conditions or may fall out of favor. Using classic, well-established plant species that have proven their resilience and appeal over decades is essential. Tim Brown's book, "The Anatomy of Plant Selection," offers valuable insights into selecting and combining plant species for lasting impact.

**Scalability and Adaptability:** Landscape designs must be adaptable to various scales, from small gardens to large properties. Designs should accommodate changes and growth, maintaining their integrity and beauty across different sizes and contexts. Ensuring your landscape design is scalable and adaptable to various environmental conditions and client needs is vital for longevity.

**Balancing Tradition and Innovation:** Creating timeless landscapes involves balancing innovative design elements with traditional principles. This includes integrating new technologies and materials with classic design features that have stood the test of time. Sensitivity to cultural and environmental changes, along with a focus on sustainable practices, ensures the landscape remains relevant and appealing for years to come.

By focusing on enduring plant species, scalable designs, and a balanced approach to innovation and tradition, landscape designers can create spaces that are beautiful, sustainable, and resilient. This approach enhances the longevity and impact of your landscape designs, ensuring they continue to resonate with clients and visitors for years to come. Here are three challenge highlights.

## Cost Challenge 1

**Avoiding Trends: Trends come and go, and designs that rely heavily on current trends can quickly become outdated.**

---

## Cost Challenge 2

**Philosophy deviation: spatial design has helped us maintain design philosophy or mood of a building its interior design concept yet allowing for unique features.**

---

## Cost Challenge 3

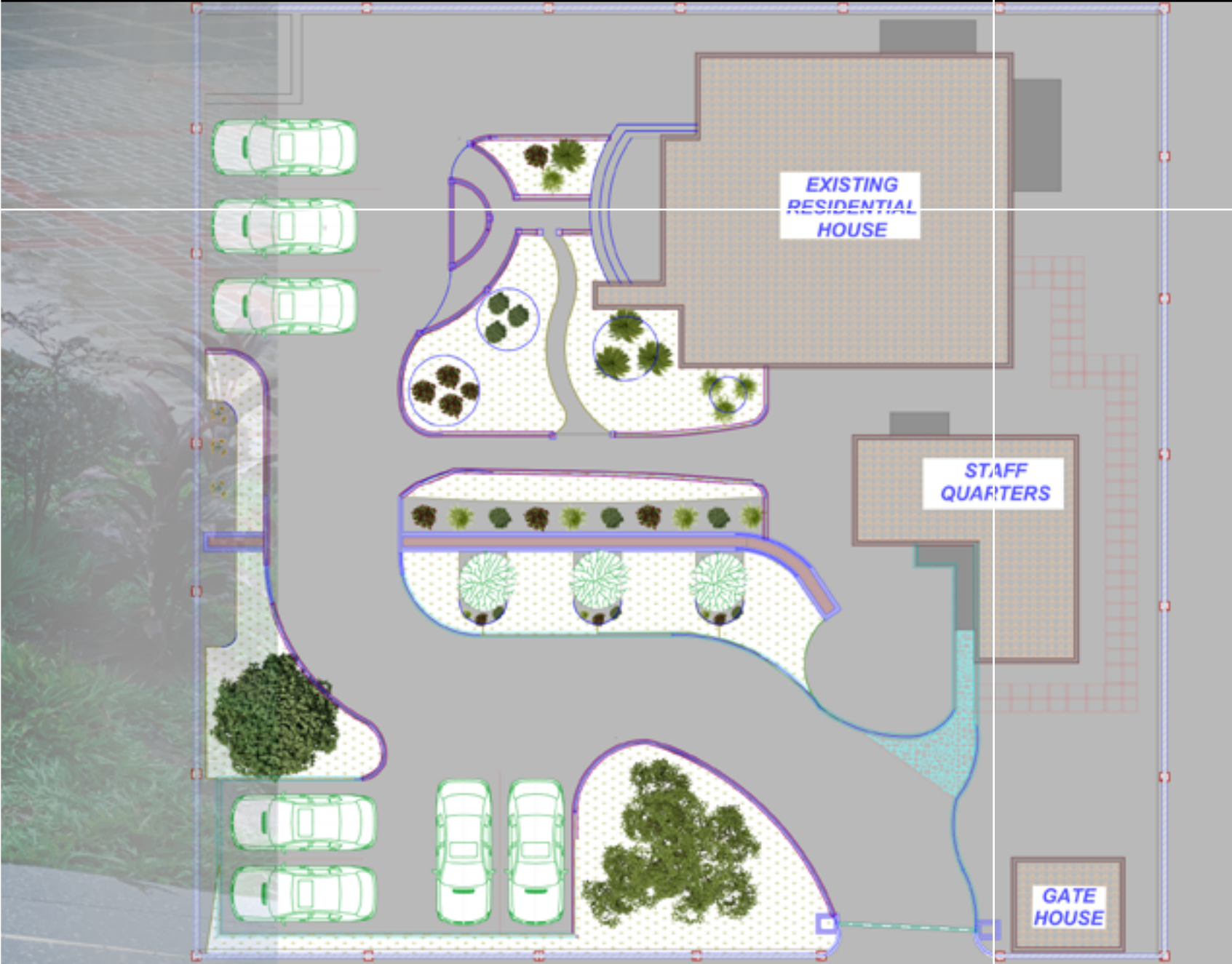
**Cultural Relevance: our designs are sensitive to cultural contexts and avoid elements that may become controversial or misunderstood over time.**

# Some We made Earlier

Explore select projects outrightly secured by Ideal Ville and how they have left their mark across the industry.



# Kasangatti Behomoth



## Client

Private

## Project

Landscaping Works

## Role

Landscape Contractors

## Key Facts

**3960 m<sup>2</sup>**

BUA

**2056 m<sup>2</sup>**

GLA

## Delivery Route

Design and Build

## Location

Wakiso

**Complete**

STATUS

**6months**

DURATION

This was the most comprehensive project of 2023 that saw us go to the lengths of road engineering. Our canvas was originally steep sloping. We went ahead to divided it into two levels separated by a natural stone mass retaining wall. We were able to pull off four sections; The Front yard & Lot & Backyard & Back alley, Laundry Porch, driveway & subsistence farming garden. This site had a very high-water table and required various techniques of dewatering and as well as a well-engineered road formation for the driveway.

The backyard and front center piece were undoubtedly the most eye-catching unique features of this project that introduced our signature insitu walkway design for the very first time and a simple patio. This portfolio piece encapsulates not just a project, but a saga of innovation, a testament to the fusion of vision and craftsmanship that defines our journey through the world of design and construction.

Find more imagery on it on our instagram page. @idealville\_landscaping <https://www.instagram.com/p/CtpaB0z0QeW/>

# Mutungo AirBnB



## Client

Private

## Project

Outdoorliving design & construction

## Role

Contractors

## Key Facts

**1300 m<sup>2</sup>**

BUA

**1200 m<sup>2</sup>**

GLA

## Delivery

Design and Build

## Location

Nakawa

**Ongoing**

STATUS

**9 months est.**

DURATION

A brilliant canvas spatially designed from the building's contemporary industrial design philosophy. The building had a limited outdoor space for relaxation and group hostings. So we worked with the architects to remodel the top slab into an outdoor rooftop lounge. with a dedicated kitchen, jacuzzi, bar and more. We kept consistent with the groove wall facades of the building and you can see that inspiration carry on to the walkways.

Interior design's exposed I-beams and rafters carries on to the outside on the patio specifically painted to mimic rust on metals. Find more imagery about this property and how it comes along on our Instagram page. @idealville\_landscaping [https://www.instagram.com/reel/C3-F6OpL2g-J/?utm\\_source=ig\\_web\\_copy\\_link&igsh=MzRIODBiNWFl-ZA==](https://www.instagram.com/reel/C3-F6OpL2g-J/?utm_source=ig_web_copy_link&igsh=MzRIODBiNWFl-ZA==)

Mawanda Rd.



**Client**

Private

**Project**

Renovations works on two units.

**Role**

Contractors

**Key Facts**

**1889 m<sup>2</sup>**

BUA

**956 m<sup>2</sup>**

GFA

**Delivery**

Design and Build

**Task**

Post production on renders

**Project**

Design renders for Proposed UPF hospital and studio apartments.

**Key Facts**

**Complete**

STATUS

**2 months**

DURATION

This was a property of three two units each with its own landscape rehabilitation. A property of over 20 years finally got an new outdoor face with new features. New lighting features for night ambience rather than vision. Replacement of old cobble stone with vibrated concrete pavers and a slate masonry driveway in another unit. New unique staggerd walkways made of roughed granite and slabs and and river stone pebbles replaced the old mass concrete walkways.

The boundary wall was given a flora screen of bougainvillea and palms. Lastly, was "Zimbabwe" grassing by nusery sods. Find more imagery on it on our instagram page. @idealville\_landscaping <https://www.instagram.com/p/CtpaBOz0QeW/>

# Kitende Residential



## Client

Private

## Project

Landscaping works

## Role

Landscapers

## Key Facts

**Complete**

STATUS

**660 m<sup>2</sup>**

GLA

During the close of 2022, I managed to e-mail in a sleazy expression of interest to a quantity surveying firm in kampala. Out of panic ,the email couldn't be recalled in time but I had plenty of time to look at my accidental brilliance.

As a direct result of this mishap, 2days later I was hired to do some post production on multiple renders they were pushing out of their Vray batch export. Among these was construction of a dryer plant and evaporator.

# Bulindo Estate IVL02



## Client

Private

## Project

External works

## Role

Domestic sub-contractor

## Key Facts

**Complete**

STATUS

**1300 m<sup>2</sup>**

GLA

In September 2021, Assistant Inspector General of Police-AIGP Dr. Moses Byaruhanga, the Director of Health Services in Uganda Police Force, said the top police administration prioritized the construction of the hospital this financial year after realizing that they lack a referral facility like the army despite being in existence for more than 100 years

Hold onto your hats folks, we are over the moon to let you know we'll be consulting experts for this project. This isn't just another gig for us, rather a lasting impact in the men and women of the armed forces.



# Mego Bellania Apartments

# Nabusugwe 1st Phase



**Client**  
Private  
**Project**  
Hardscape works.  
**Role**  
Sub-contract

**Key Facts**  
**Complete**  
STATUS

**800 m<sup>2</sup>**  
GLA

From a regular paved lot, we kicked off with giving the wall fence a unique rendering design without conflicting the apartments wall render. And then a unique mamoran design for gate canopy and columns. A couple of planters along the wall both outside and inside to wind up with this behemoth of 1500 sqm parking lot. Find the rest of the imagery on this apartments project on our Instagram Page via link <https://www.instagram.com/p/CWynOIJLZR4/>

**Client**  
Private  
**Project**  
External works  
**Role**  
Landscapers

**Key Facts**  
**Complete**  
STATUS

**2600 m<sup>2</sup>**  
GFA

It is easy to get salty about how ordinary this parking lot looks but that was the job and we got it done. We managed to get away with installing CRS15/20 inlays highlighted with nighttime roadway Cat Eyes". This canvas then leads to the first floor of the house from the back. It gets interesting in the future with the second phase in the works as we anticipate for \*showstopper\* front section main landscape design. Find the rest of the imagery on this Nabusugwe project on our Instagram Page via link <https://www.instagram.com/p/CWynOIJLZR4/>

# In the Pipeline

Proven ability to deliver across all industries.

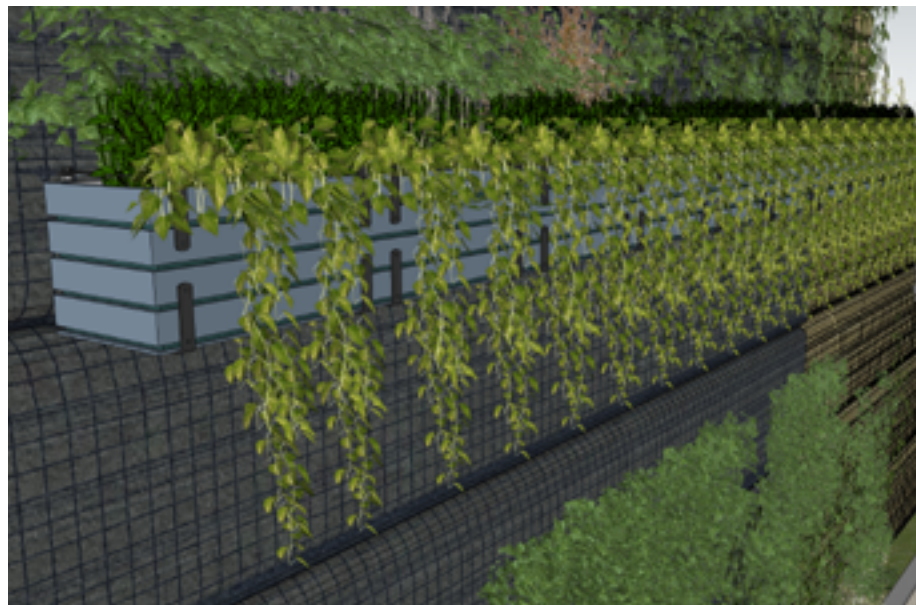
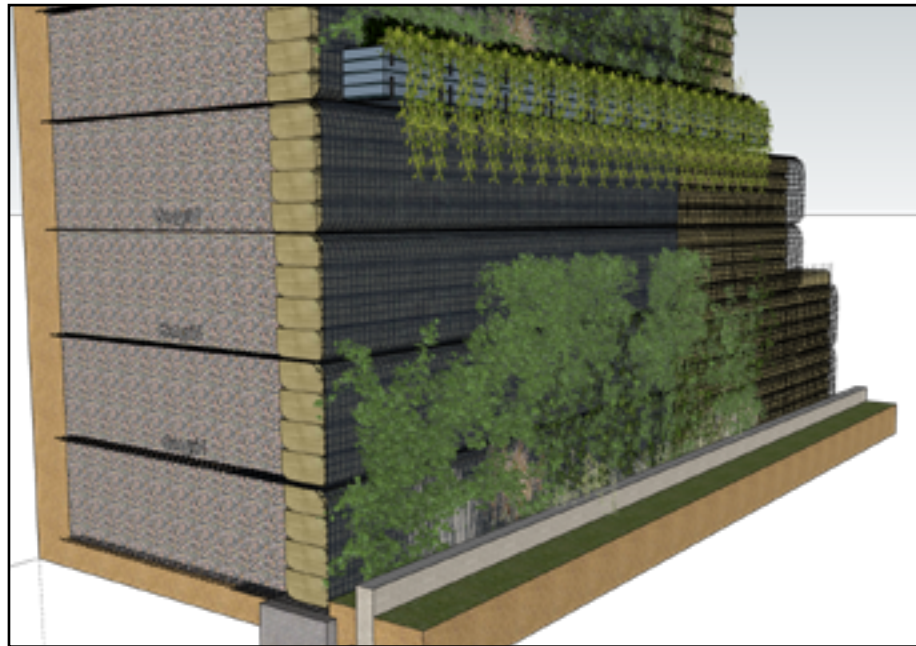
Design 'n Build Sub-contract

**2024**

Year

**NAKAWA**

Geogrid reinforced green wall



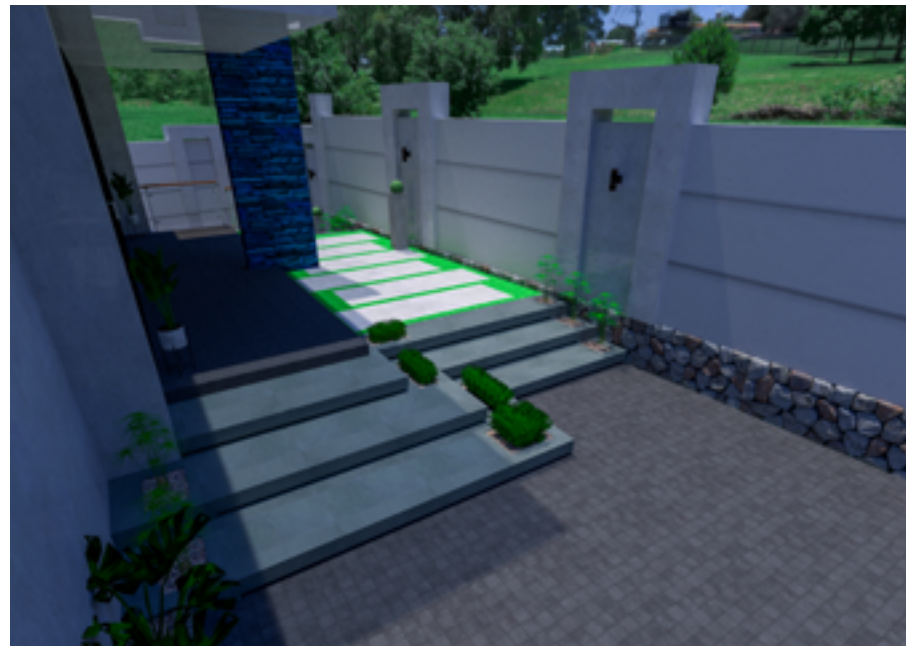
Design 'n Build

**2024**

Year

**KIRINYA**

Outdoor living & External works



Design 'n Build

**2024**

Year

**NAKASEKE**

Farm house; external works & vertical gardening



The proof is always in the pudding. Here are some of the selected projects that we are cooking in time to tally this year's project turnover over the one from last year.

# In the Pipeline

Proven ability to deliver across all industries.

**Vegetation control & soft landscaping**

**2024**

Year

**KAWANDA**

MSE & Vegetation control in pavers



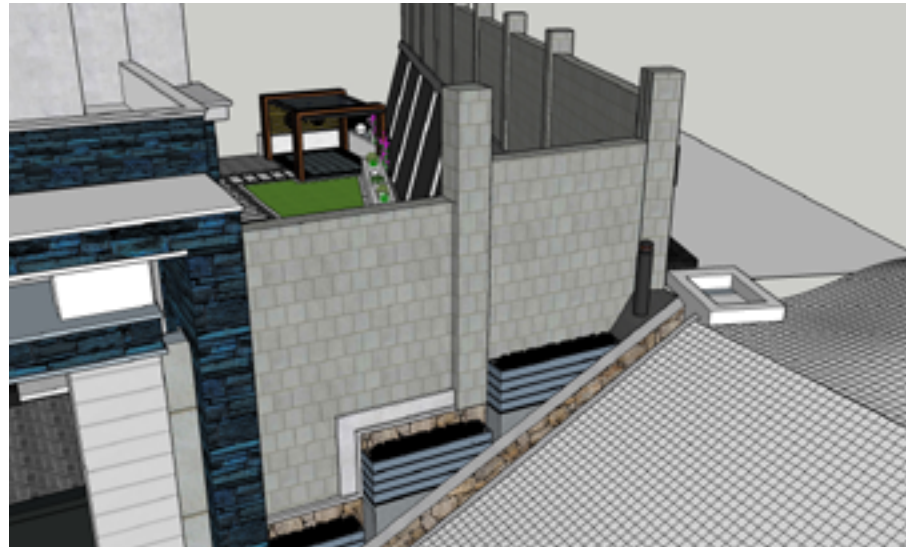
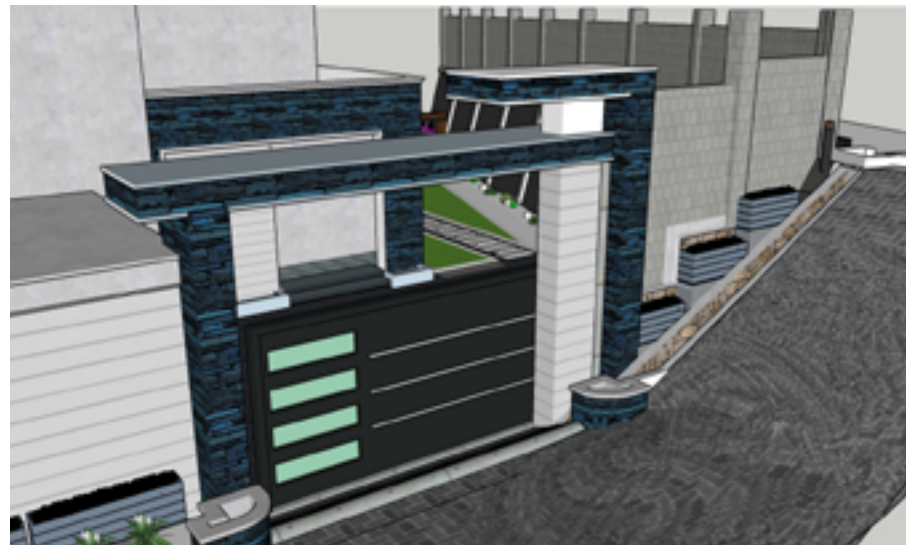
**Design 'n Build**

**2024**

Year

**MUTUNGO**

Gate, Wall facade & road pavement



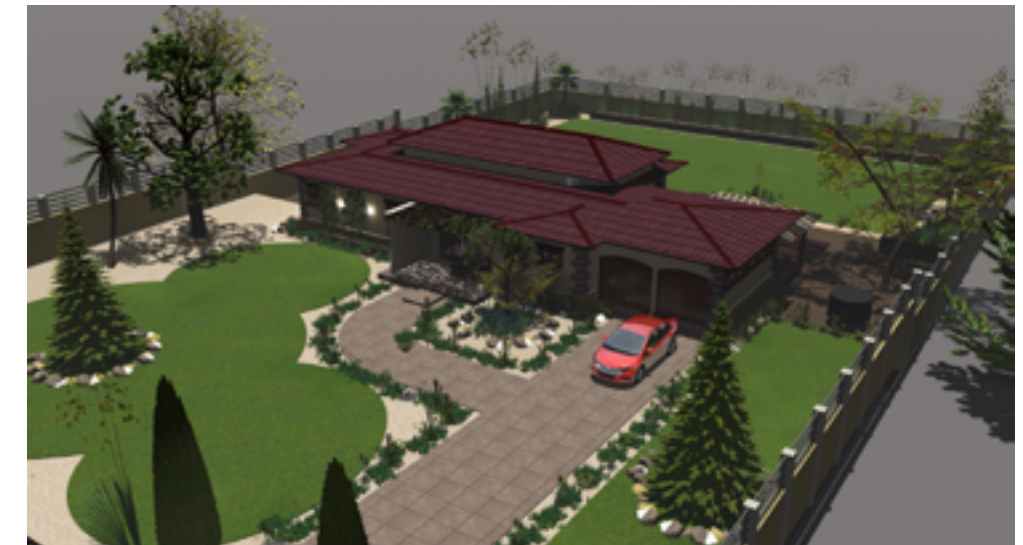
**Design 'n Build**

**2024**

Year

**KYABAKADDE**

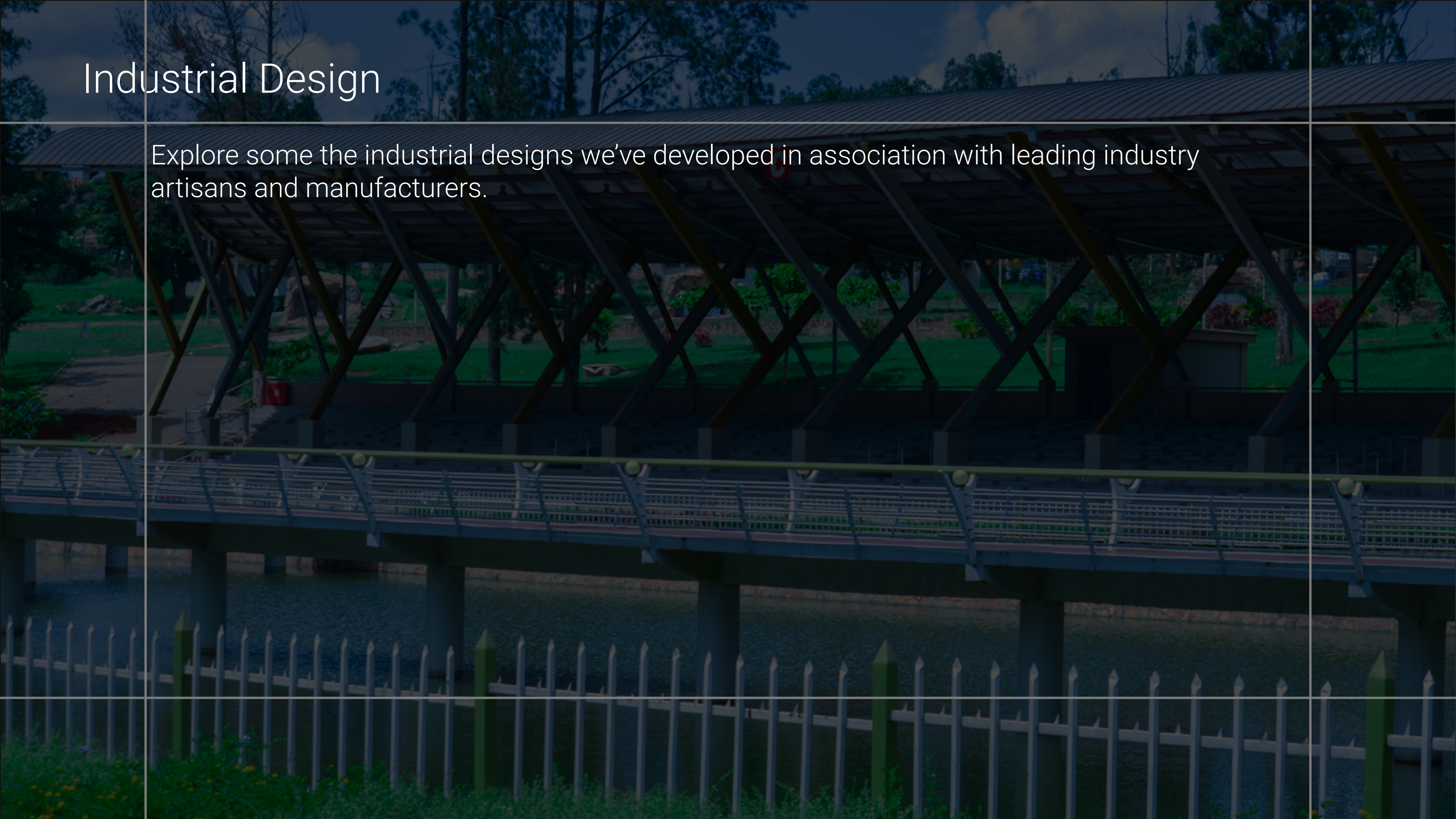
Farm/Country Home



The proof is always in the pudding. Here are some of the selected projects that we are cooking in time to tally this year's project turnover over the one from last year.

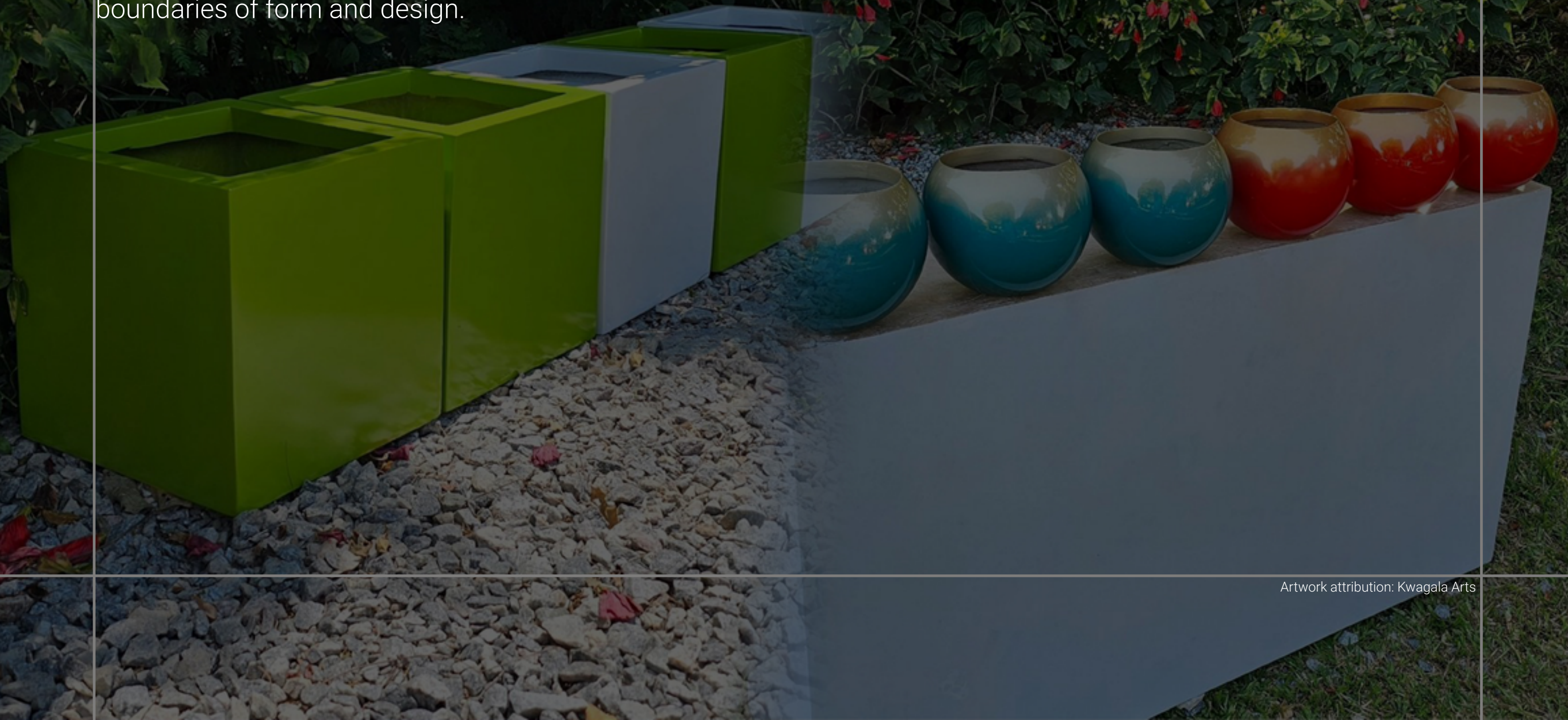
# Industrial Design

Explore some the industrial designs we've developed in association with leading industry artisans and manufacturers.



# Fibre Glass Artwork

Fiberglass art has emerged as a leading force in contemporary artistic expression. Its unique properties – a marriage of strength and flexibility – allow for the creation of sculptures, installations, and functional objects that push the boundaries of form and design.



Artwork attribution: Kwagala Arts

# Fibreglass Planters

## **Durability and Aesthetics**

Using fiberglass planters in your landscaping designs is a great way to enhance the beauty of any indoor or outdoor landscape. Their durable, commercial grade construction and vast color choices make fiberglass plant containers an interiorscape and exterior landscaping favorite. Made to last for years, fiberglass planters can withstand extreme indoor and outdoor conditions, including freezing cold winters and blazing hot summers. An automotive-grade paint finish ensures that fiberglass planters are moisture and rot-resistant.

As for the morph designs, your imagination is the only limit.



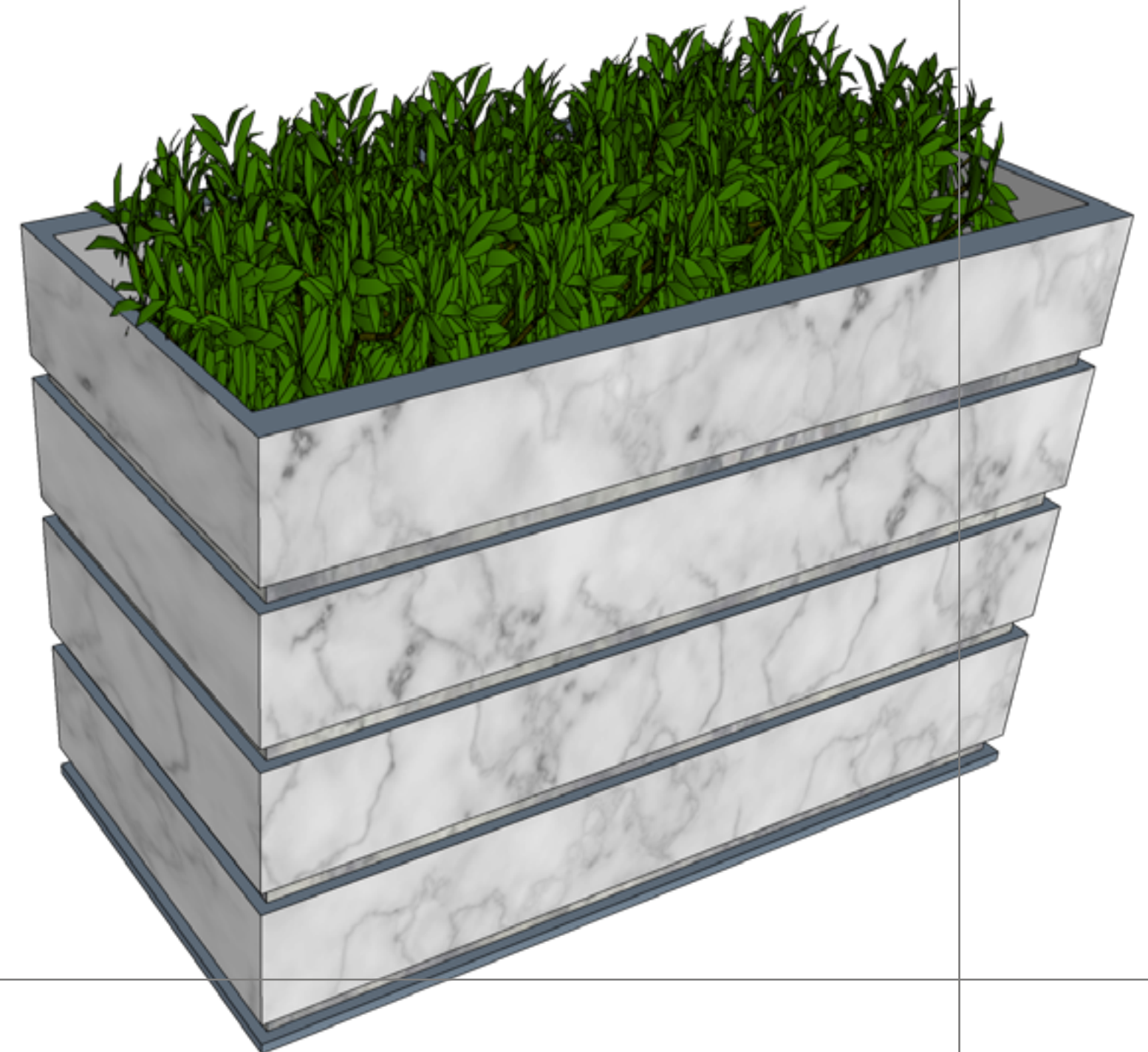


# Fiber Design

## Goodbye flemsy planters

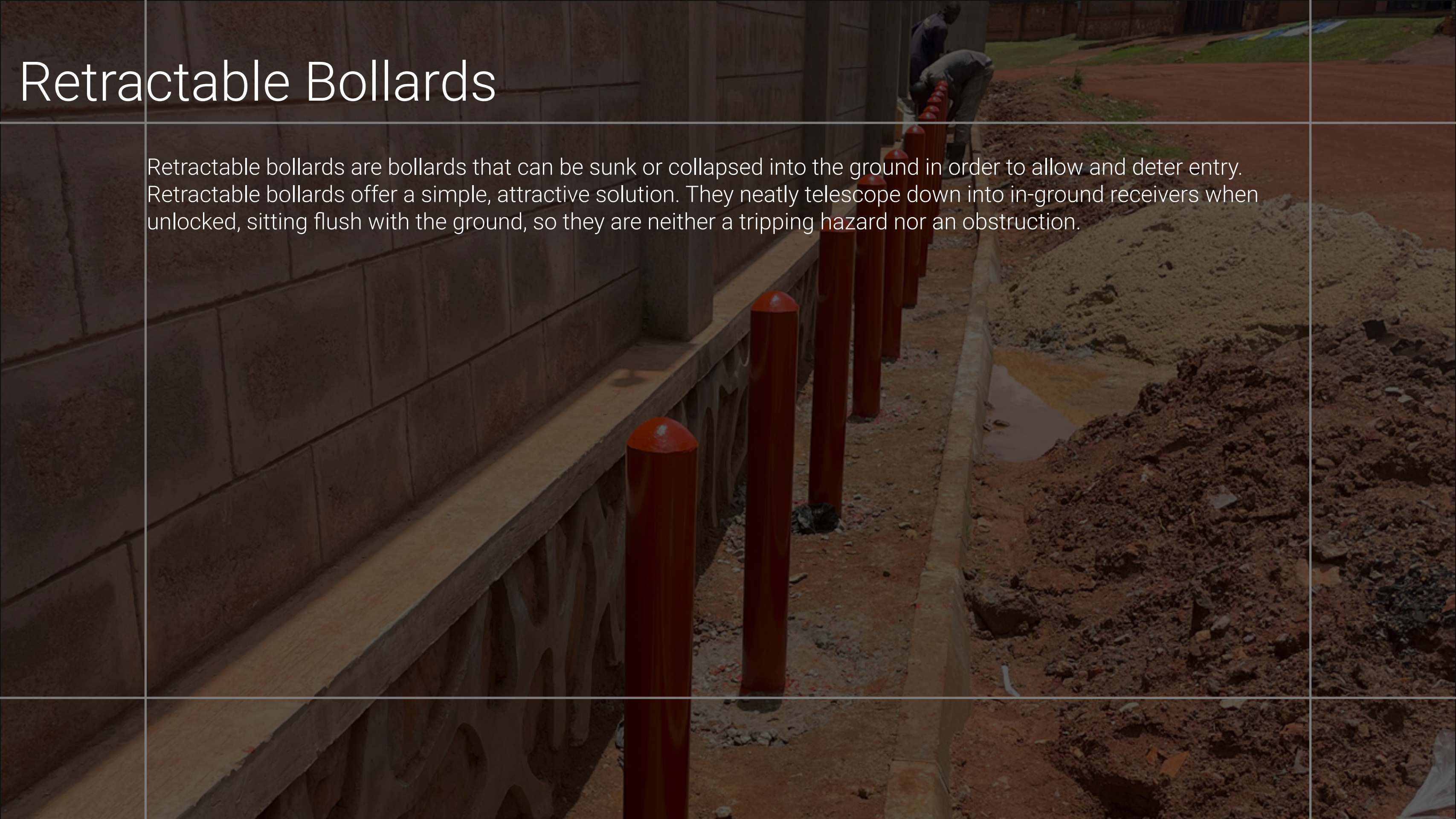
Fiber glass tends to have one flaw; its susceptible to bulging. This means you are limited to dessert plants or flora with adventitious roots. Well, that's not fun in some situations. At Ideal Ville, we have invented techniques of solving this issue. One of our most popular solution is the addition of grooves to the rectangular planters as seen on this right-side render.

The grooves idea was genius from the get go. It adds unprecedented rigidity to the planter but also allows for sophisticated paint schemes especially if put in a landscape that demands that. Mediterranean and modern industrial architectural design philosophies have become so popular. Grooved facades are quite come on these buildings which makes it a perfect habitat for these planters. Besides the rectangular planter, we've devised so may solutions on other designs to tackle the rigidity issue.



# Retractable Bollards

Retractable bollards are bollards that can be sunk or collapsed into the ground in order to allow and deter entry. Retractable bollards offer a simple, attractive solution. They neatly telescope down into in-ground receivers when unlocked, sitting flush with the ground, so they are neither a tripping hazard nor an obstruction.



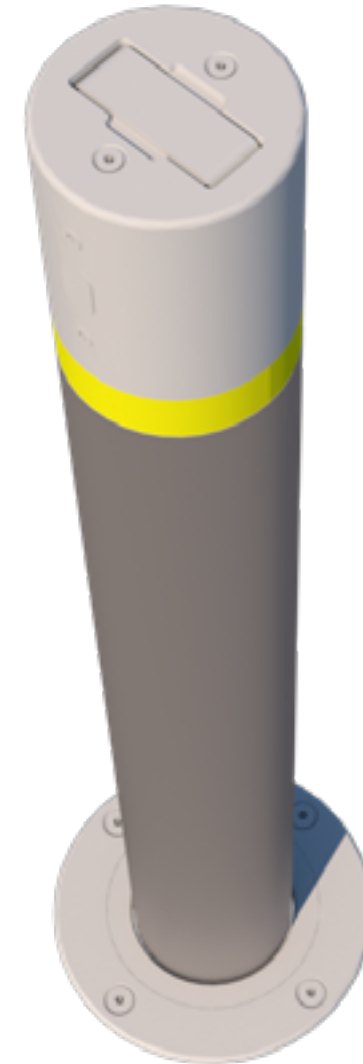
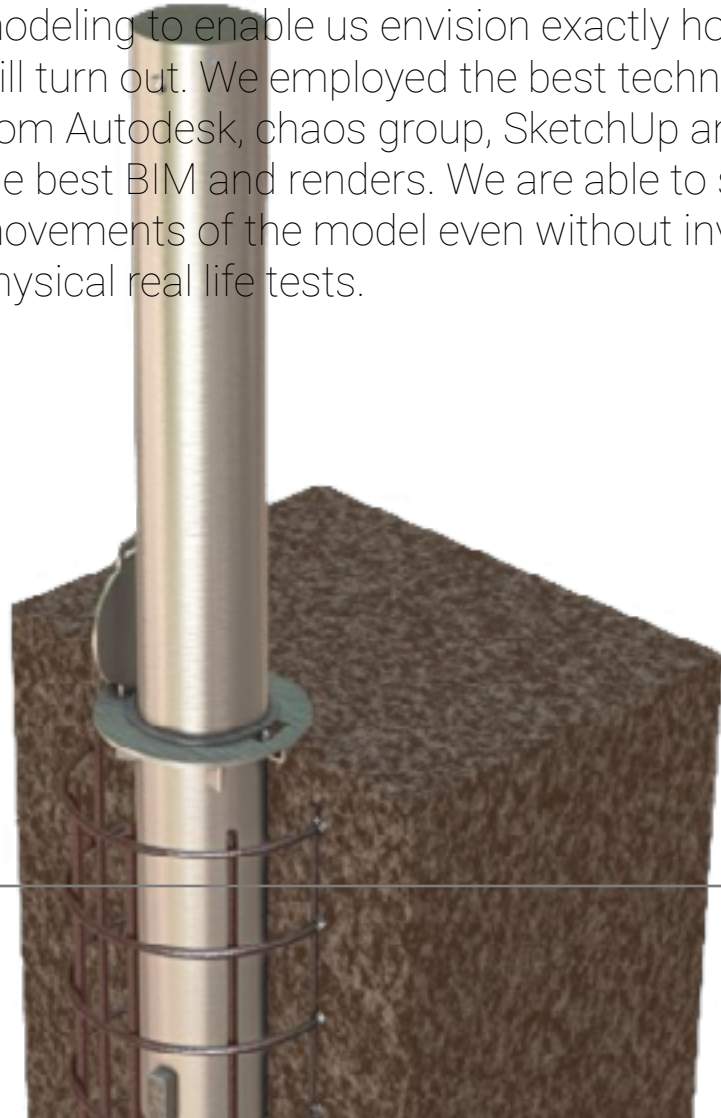




# The Design

## Precision modeling

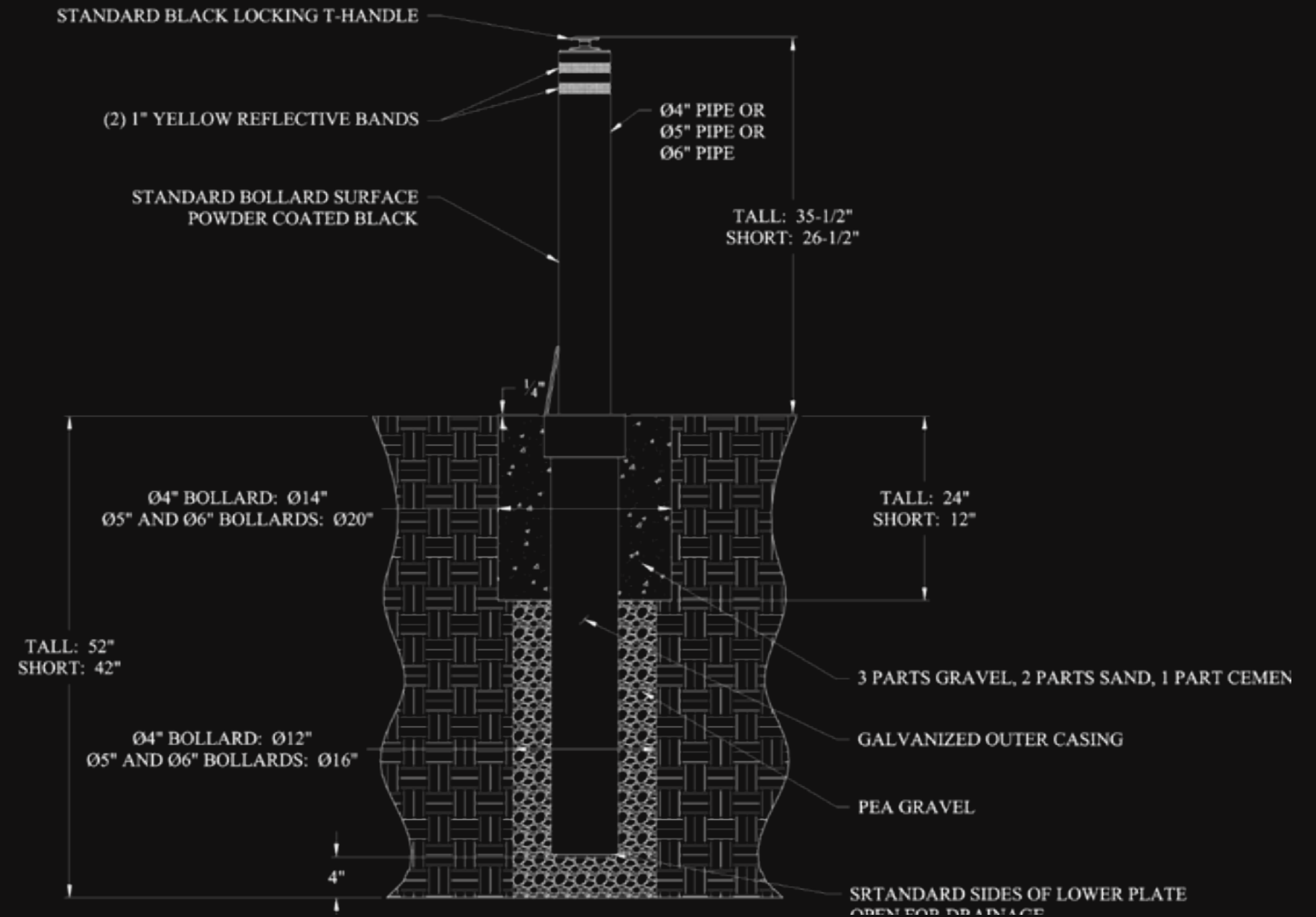
We design our models to the detail of vectorization. That's the minimum expectation from our partnering artisans and fabricators. We incorporate in some mild building information modeling to enable us envision exactly how our final product will turn out. We employed the best technologies in the industry from Autodesk, chaos group, SketchUp and RIB GmbH to build the best BIM and renders. We are able to simulate a lot of the movements of the model even without investing too much on physical real life tests.



# Designed for Practicality



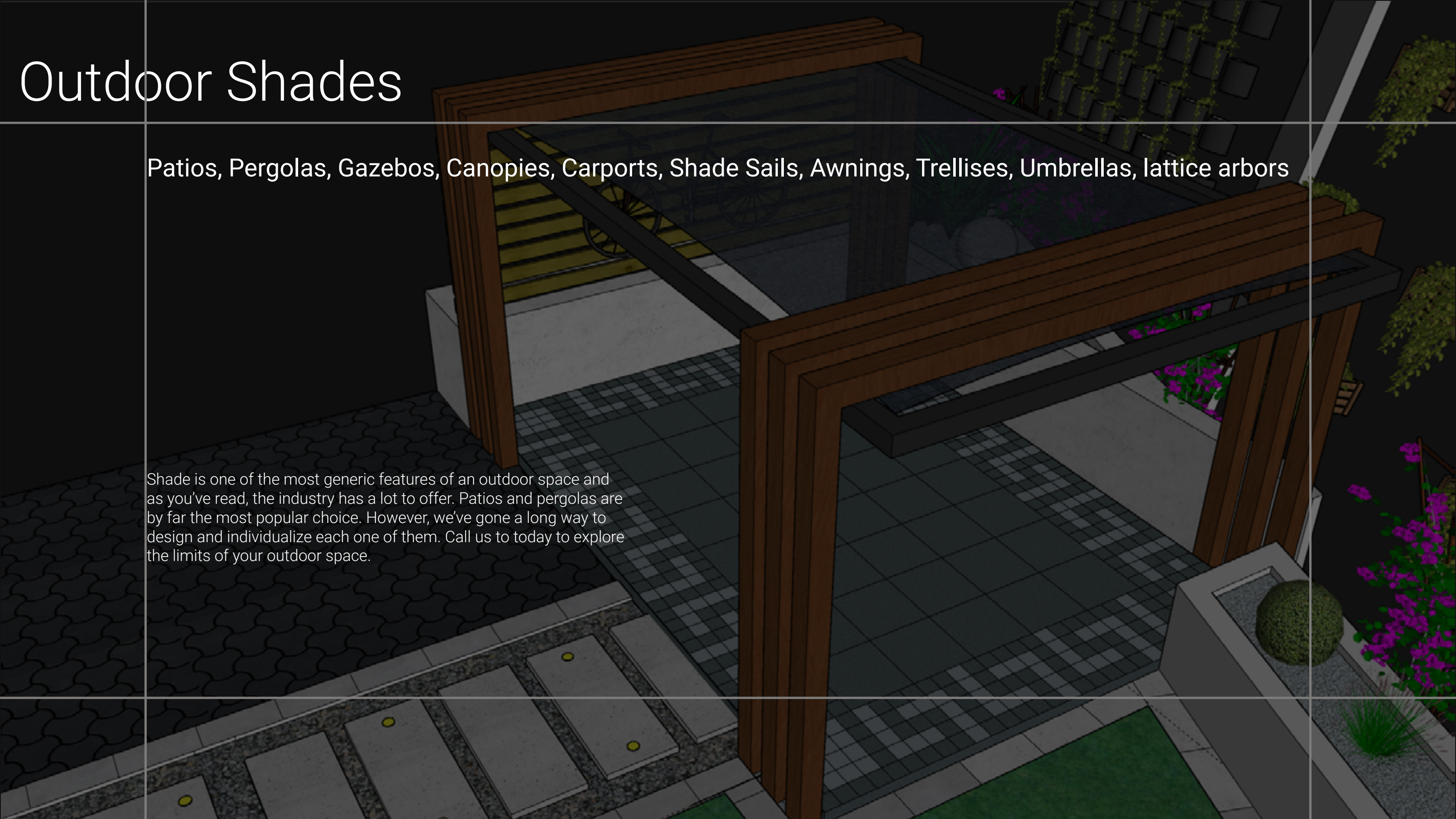
There are a lot of off-the-shelf structural steel sections on the market and that's just one thing. It takes a lot of studio hours and testing to craft something this functional out of the off-the-shelf products. We've partnered with industry leading steel fabrication artisans to manufacture these unique bollards. Practicality goes a long way with us with our engineering background, we value delivering functional products. They carry along the characteristic strength of steel, galvanized coating for rust and corrosion protection. Reliability for retraction component is crucial especial with dust as the biggest nemesis; we tackled this with halving as little moving parts as possible.



# Outdoor Shades

Patios, Pergolas, Gazebos, Canopies, Carports, Shade Sails, Awnings, Trellises, Umbrellas, lattice arbors

Shade is one of the most generic features of an outdoor space and as you've read, the industry has a lot to offer. Patios and pergolas are by far the most popular choice. However, we've gone a long way to design and individualize each one of them. Call us today to explore the limits of your outdoor space.





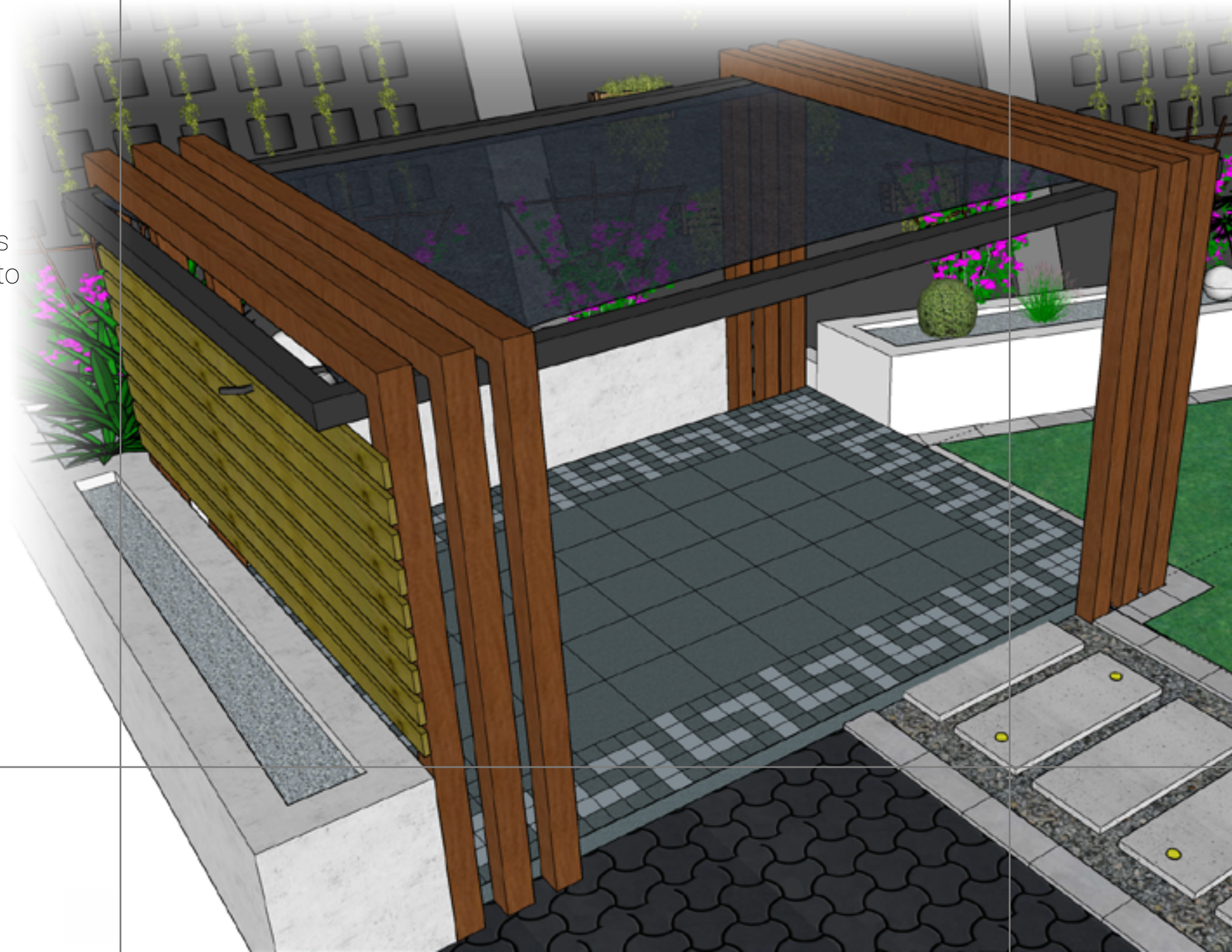
# Patios & Gazebos

## Easy Assembly

Patios and gazebos have taken off as the most common outdoor shades. This is because of their simplicity and less components in comparison to a gazebo with more functional accessories. Today they are seen as another room of the house and an essential piece of outdoor living. The main goal is modularity which aims at making them affordable and quick to manufacture and assemble. Our minimalist gazebo speaks volume on this with a 6day delivery window.

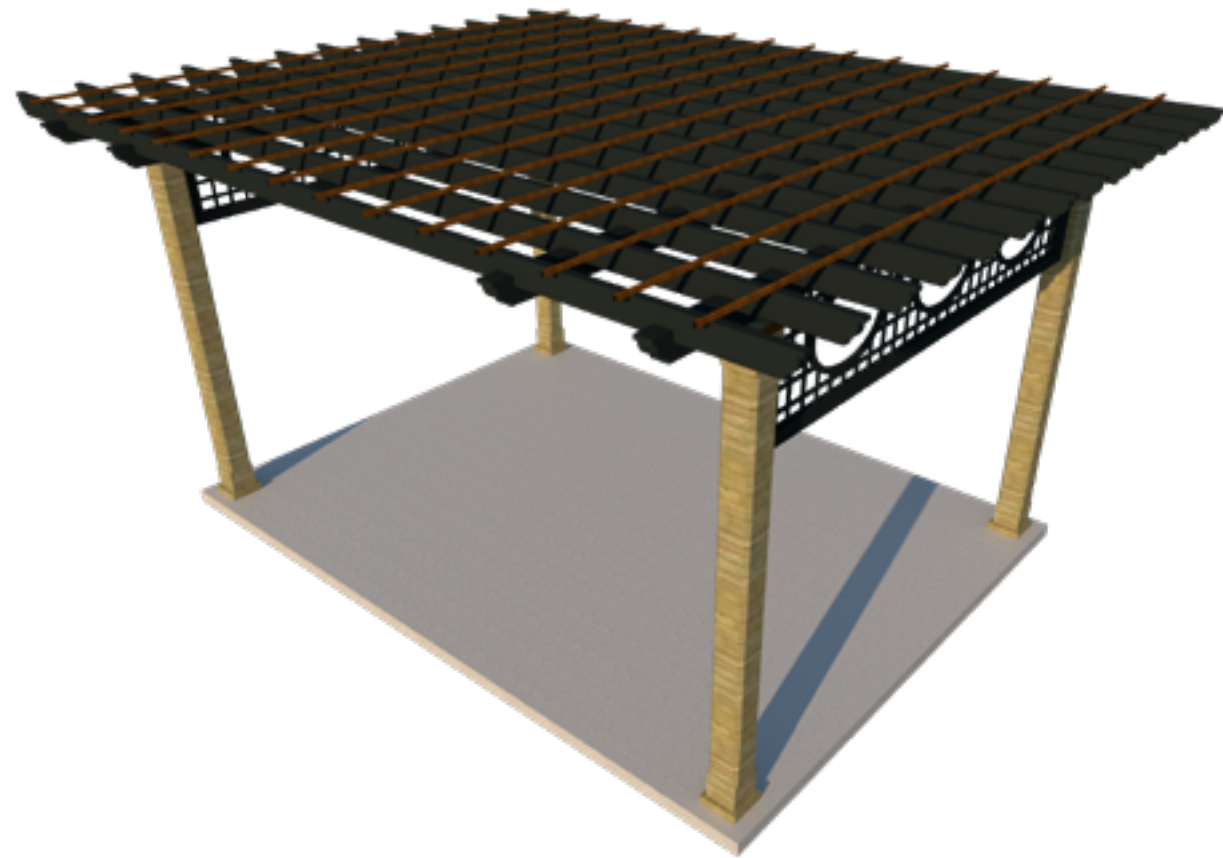
### You can option them with;

- Outdoor lighting
- Connectivity (ethernet and utilities)
- Outdoor furniture (rattan chairs, hammocks)
- Outdoor kitchen (grills)
- Planters
- Flower trellis
- Flowers and cascading plants.





## Classic 3x4 Wooden



This emulates the famous pergola and gazebo rafters. It comes with a top flower trellis as standard however one can swap it with translucent polycarbonate sheets or water proof fabric.

The gazebo visually complements most Neo-colonial, pitched roof bungalows and mediterranean architectural styles.

## Minimalistic 3x4 Steel-wooden composite



This is a minimalistic gazebo that speaks nothing but clean and modern looks. It is made of 6X6 brackets and 6X6 wooden post. It comes as standard with microteck finished floor However you can option for other floor types like increte, epoxy, porcelain tiles, cobble stone, wooden etc.

This gazebo compliments most types of architectural styles or design philosophies.

# Recessed Inspection Chamber Covers

Inspection chamber and manhole covers are mostly a functional thing. This means we can barely do without them. Almost every landscape canvas must have a manhole cover somewhere. Usually we try to limit their number, or hide them in the alley ways. But what if I told you, you don't have to hide any of them anymore? A design so neat and convincing, you won't know they exist. Explore our design.



# IC Covers in use

## Blend mode activated

Here is a walkway design made of segmented monolithic concrete slabs finished with color hardener and epoxy. This walkways runs over an underground tank which has two manhole covers intersecting with the walkway. The covers camouflage just fine as intended.

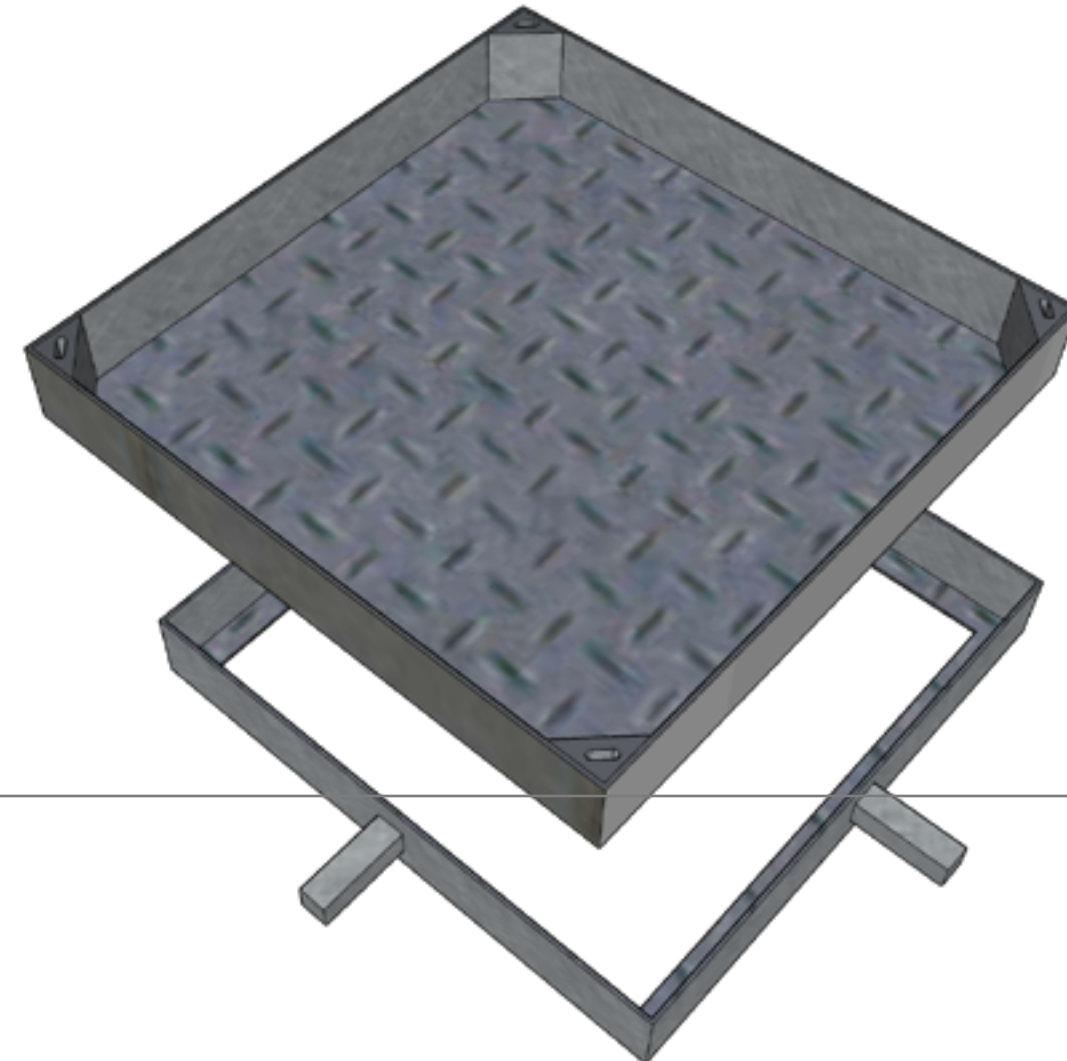
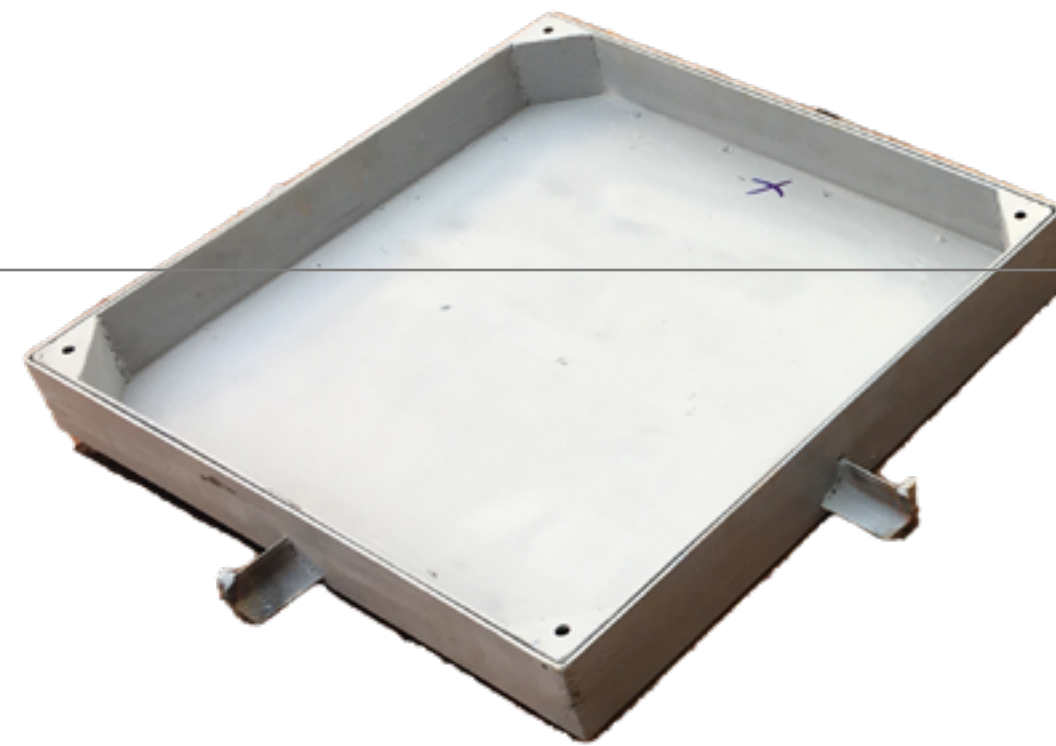




# Cover Design

## The model gets fabricated.

We design our models to the detail of vectorization. That's the minimum expectation from our partnering artisans and fabricators. We incorporate in some mild building information modeling to enable us envision exactly how our final product will turn out. We employed the best technologies in the industry from Autodesk, chaos group, SketchUp and RIB GmbH to build the best BIM and renders. We are able to simulate a lot of the movements of the model even without investing too much on physical real life tests.



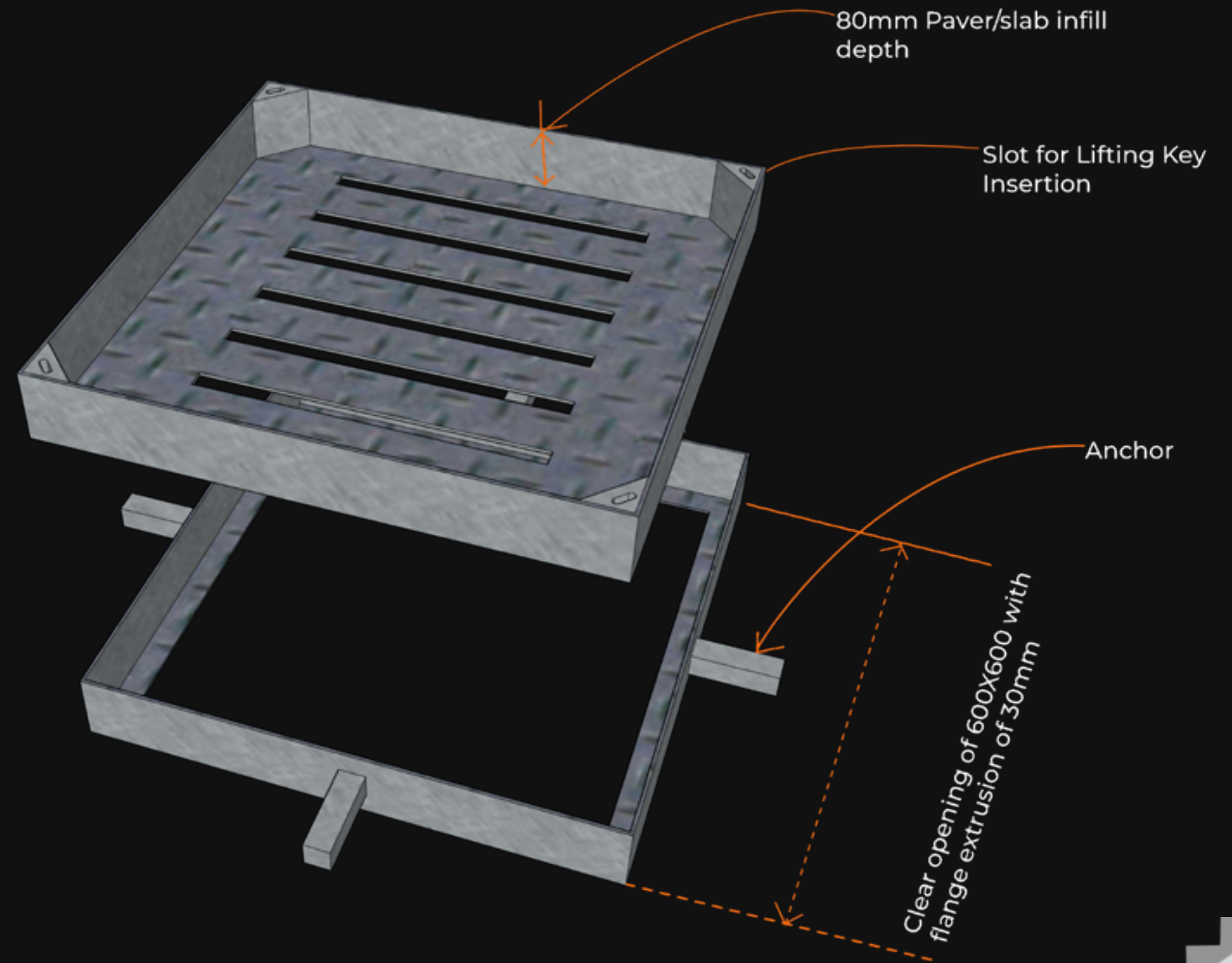


# There's a detail to it

This cover has got room for any infill. This infill is what gives it the capability to blend or camouflage with any surroundings. Whether it's in gravel, walkways, pavers or turf; it will take on its surroundings. Because of such a facade, the cover does have any visible handles and it is intended to be like that. Instead, you have key holes in which you insert special keys to help you eject the cover out of the frame during times for inspection.

The frame is built with a robust flange which is the main source of structural strength. The cover is built with heavy gauge steel plate that can be grated depending on the use case.

The fun part is we've got this in many other variants of design. The color and protection can be done using paint or powder coating.



# Outdoor Steel Furniture



Outdoor, chairs, benches, tables, coffee sets, inground trampolines...

Outdoor spaces are built for relaxation. Can't imagine how to relax without complementary dedicated furniture. If you need something robust, then steel is our answer. We customise them to fit the whole design language of the outspace. As for the color, plascon has gone a long way with an infinite of color mixing. You can basically mimic anything in nature.

# Partners and Brands We trust ...

As part of my impact framework, I have partnered with some startups and engaged with a couple of campaigns including (Visuals: from left-right) pro bono campaigns for GOU related initiatives, a brand identity for a Landscaping company, and an auto customizations and detailing startup company, a creative digital agency, a Class-A4 local contractor and freelance jobs.

**KWAGALA ARTS**

