

# Industrial Design Catalogue

"The proof is in the pudding"



Established: **2019**  
Incorporation: **Limited Liability**  
Industry: **Landscaping**  
Regional footprint: **All Uganda**

Sir Apollo Kagwa Road  
+256 704073510  
idealvillelandscaping@gmail.com



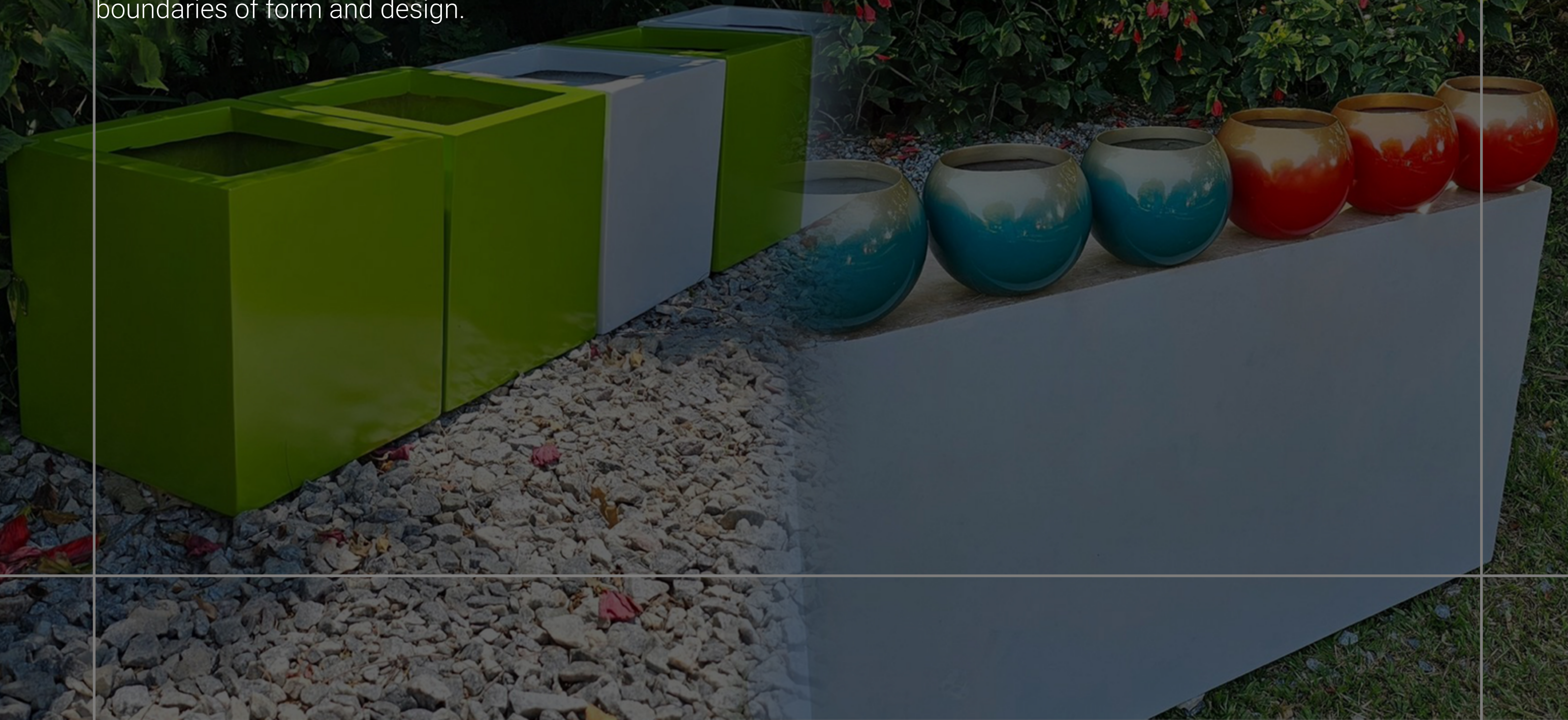
# IDEAL

IDEAL

IDEAL

# Fibre Glass Artwork

Fiberglass art has emerged as a leading force in contemporary artistic expression. Its unique properties – a marriage of strength and flexibility – allow for the creation of sculptures, installations, and functional objects that push the boundaries of form and design.



# Fibreglass Planters

## **Durability and Aesthetics**

Using fiberglass planters in your landscaping designs is a great way to enhance the beauty of any indoor or outdoor landscape. Their durable, commercial grade construction and vast color choices make fiberglass plant containers an interiorscape and exterior landscaping favorite. Made to last for years, fiberglass planters can withstand extreme indoor and outdoor conditions, including freezing cold winters and blazing hot summers. An automotive-grade paint finish ensures that fiberglass planters are moisture and rot-resistant.

As for the morph designs, your imagination is the only limit.



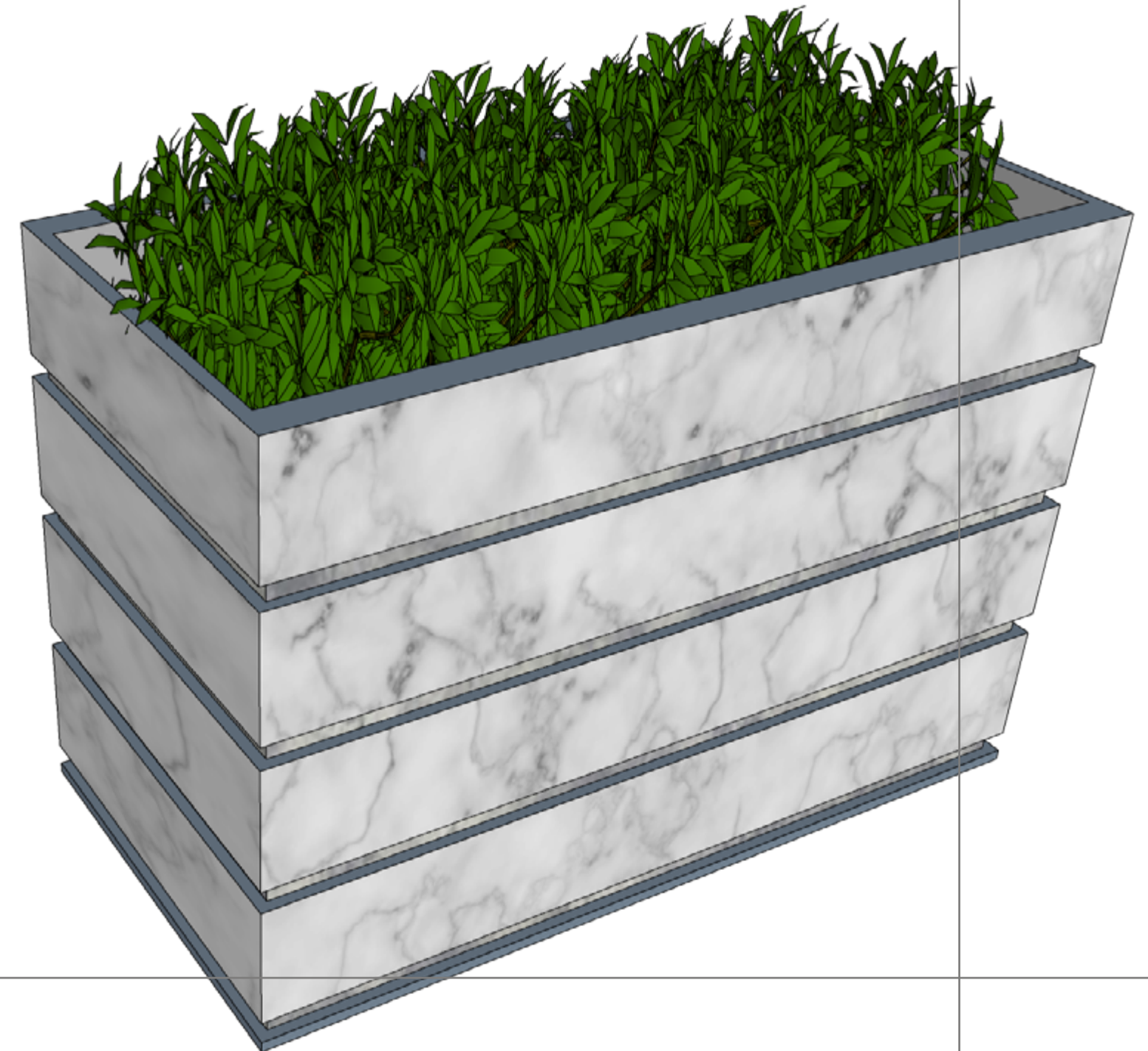


# Fiber Design

## Goodbye flimsy planters

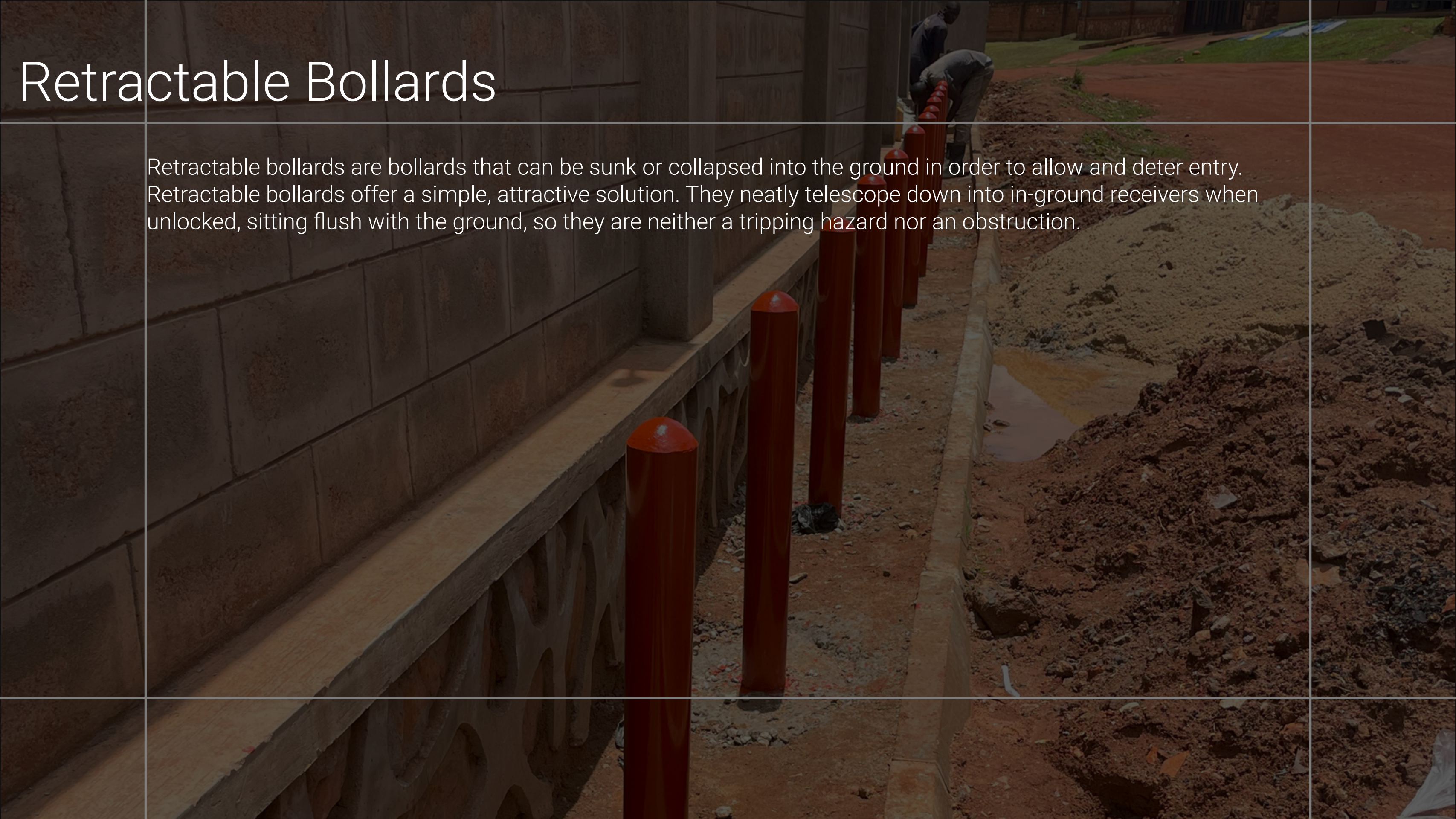
Fiber glass tends to have one flaw; its susceptible to bulging. This means you are limited to desert plants or flora with adventitious roots. Well, that's not fun in some situations. At Ideal Ville, we have invented techniques of solving this issue. One of our most popular solution is the addition of grooves to the rectangular planters as seen on this right-side render.

The grooves idea was genius from the get go. It adds unprecedented rigidity to the planter but also allows for sophisticated paint schemes especially if put in a landscape that demands that. Mediterranean and modern industrial architectural design philosophies have become so popular. Grooved facades are quite come on these buildings which makes it a perfect habitat for these planters. Besides the rectangular planter, we've devised so may solutions on other designs to tackle the rigidity issue.



# Retractable Bollards

Retractable bollards are bollards that can be sunk or collapsed into the ground in order to allow and deter entry. Retractable bollards offer a simple, attractive solution. They neatly telescope down into in-ground receivers when unlocked, sitting flush with the ground, so they are neither a tripping hazard nor an obstruction.

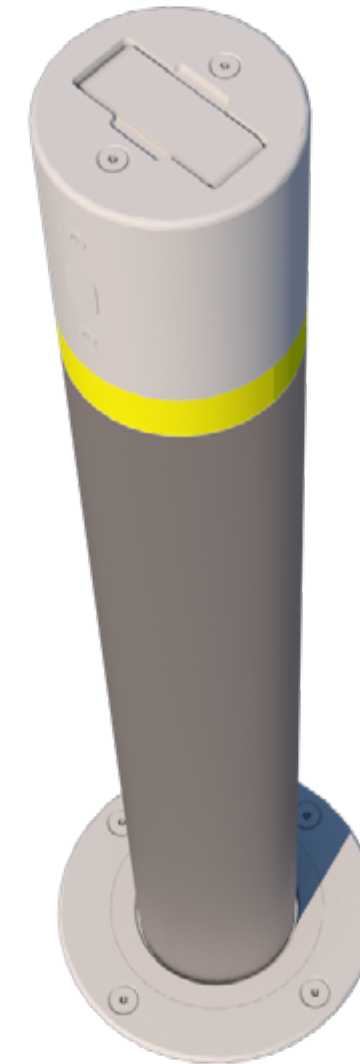
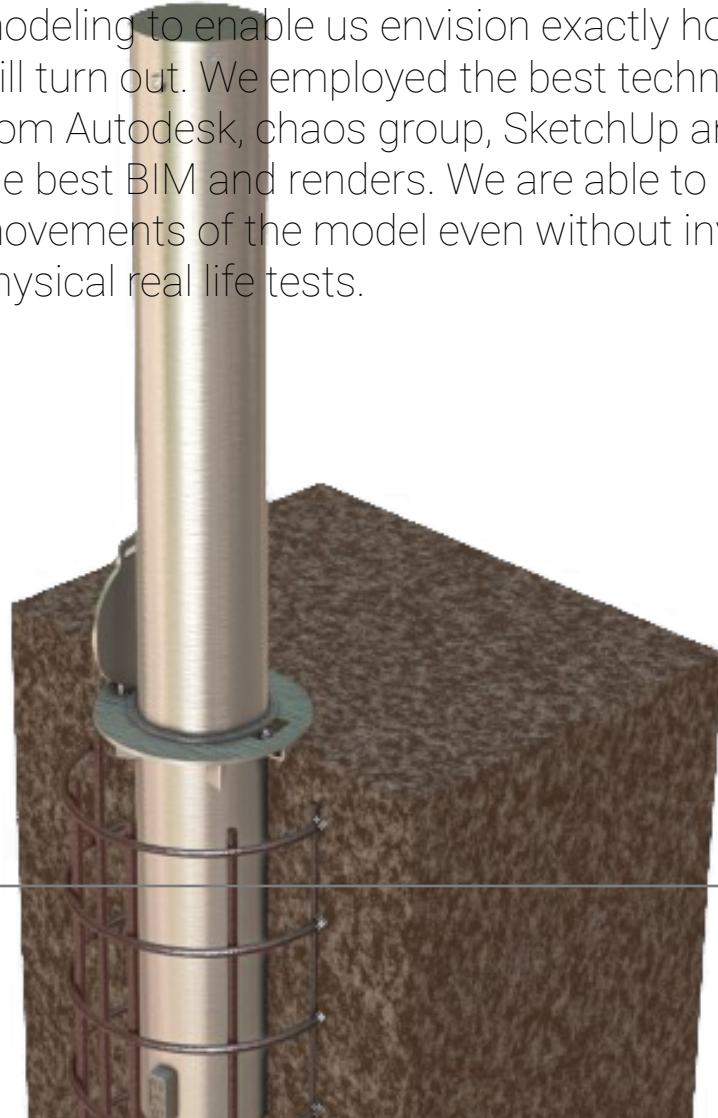




# The Design

## Precision modeling

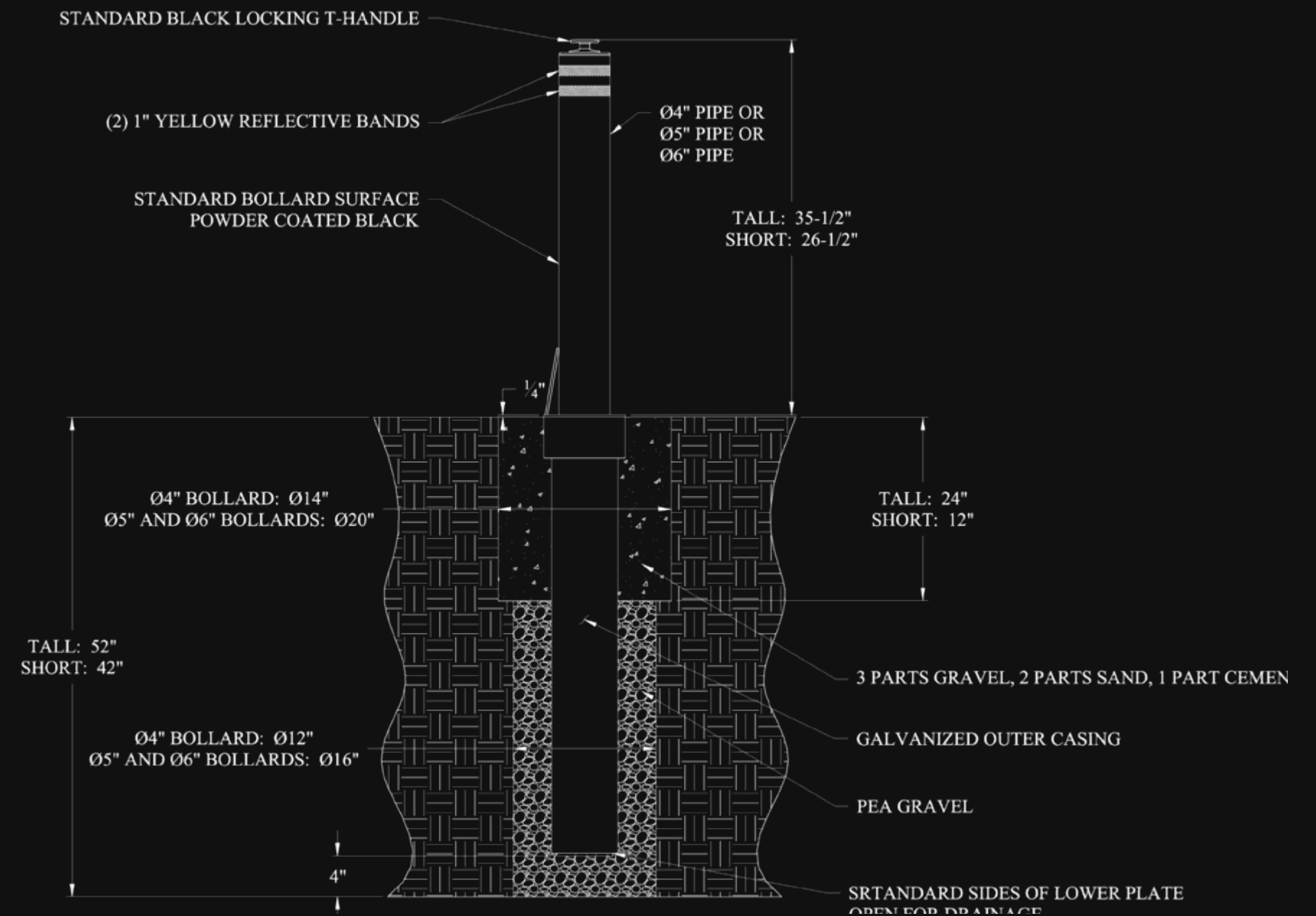
We design our models to the detail of vectorization. That's the minimum expectation from our partnering artisans and fabricators. We incorporate in some mild building information modeling to enable us envision exactly how our final product will turn out. We employed the best technologies in the industry from Autodesk, chaos group, SketchUp and RIB GmbH to build the best BIM and renders. We are able to simulate a lot of the movements of the model even without investing too much on physical real life tests.



# Designed for Practicality



There are a lot of off-the-shelf structural steel sections on the market and that's just one thing. It takes a lot of studio hours and testing to craft something this functional out of the off-the-shelf products. We've partnered with industry leading steel fabrication artisans to manufacture these unique bollards. Practicality goes a long way with us with our engineering background, we value delivering functional products. They carry along the characteristic strength of steel, galvanized coating for rust and corrosion protection. Reliability for retraction component is crucial especial with dust as the biggest nemesis; we tackled this with halving as little moving parts as possible.

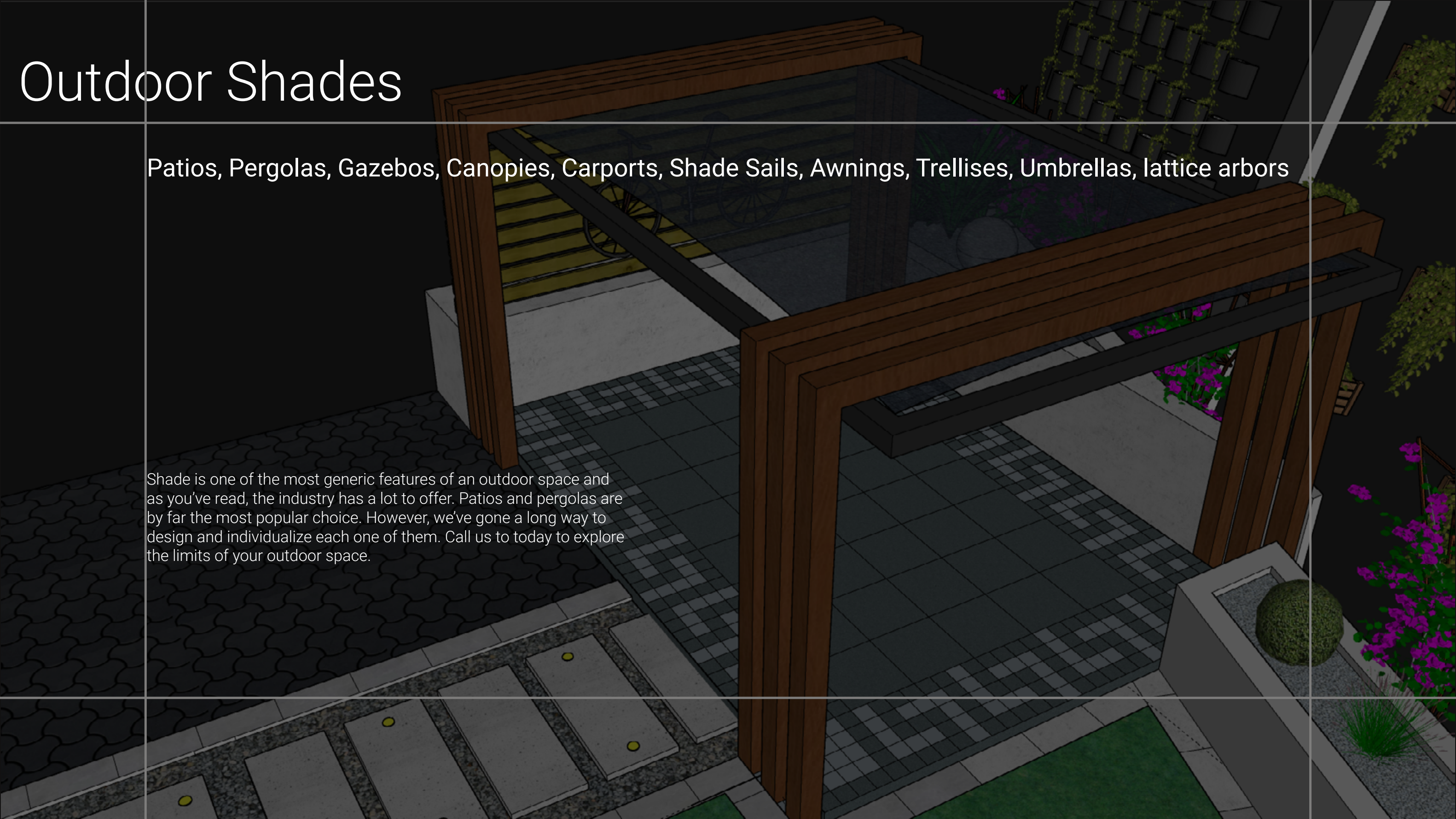




# Outdoor Shades

Patios, Pergolas, Gazebos, Canopies, Carports, Shade Sails, Awnings, Trellises, Umbrellas, lattice arbors

Shade is one of the most generic features of an outdoor space and as you've read, the industry has a lot to offer. Patios and pergolas are by far the most popular choice. However, we've gone a long way to design and individualize each one of them. Call us today to explore the limits of your outdoor space.

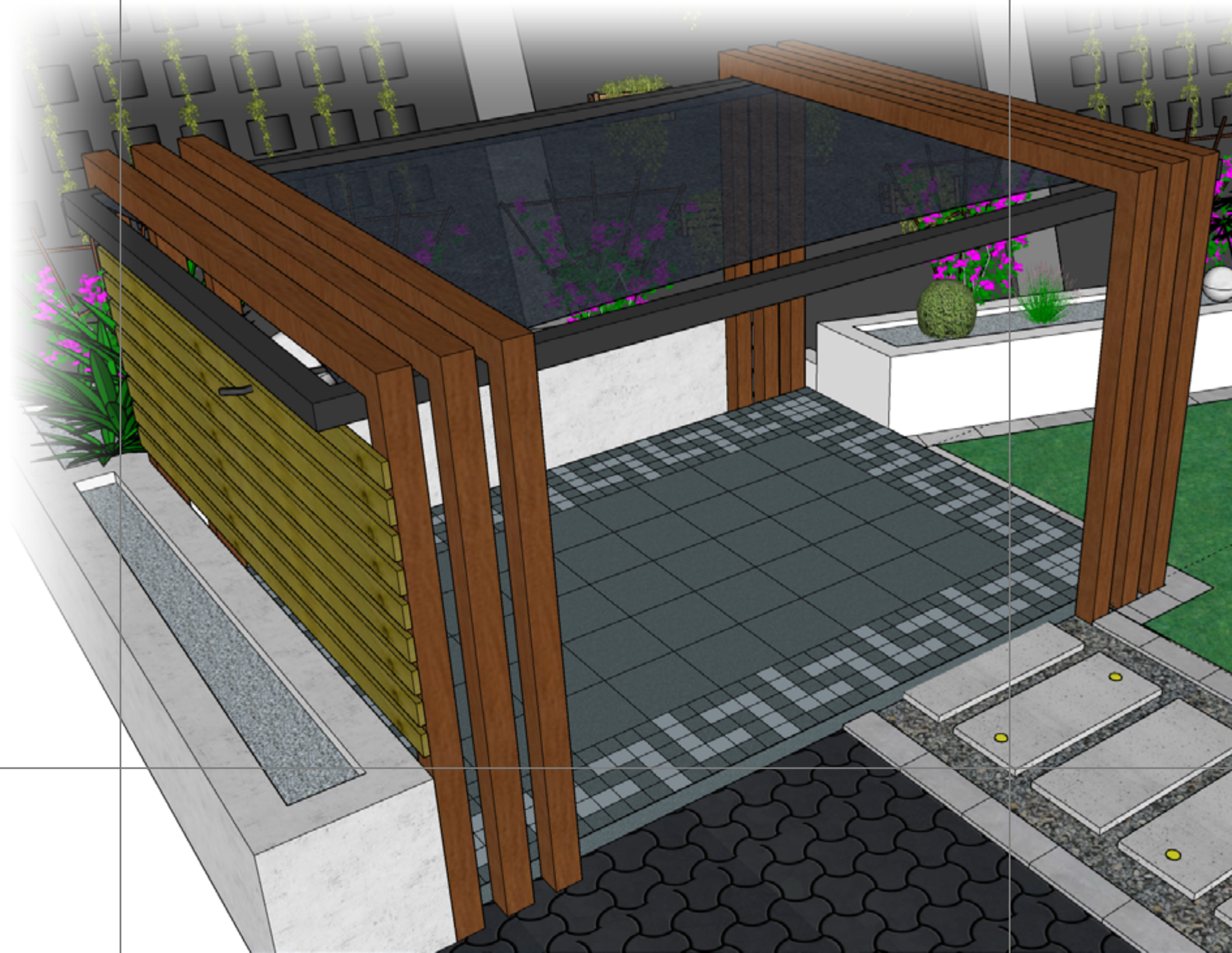




# The Patio

## Easy Assembly

Patios have taken off as the most common outdoor shades. This is because of their simplicity and less components in comparison to a gazebo with more functional accessories. We have some designs that are easy to assemble and disassemble. They are almost DIY grade.



# Recessed Inspection Chamber Covers

Inspection chamber and manhole covers are mostly a functional thing. This means we can barely do without them. Almost every landscape canvas must have a manhole cover somewhere. Usually we try to limit their number, or hide them in the alley ways. But what if I told you, you don't have to hide any of them anymore? A design so neat and convincing, you won't know they exist. Explore our design.



# In Use

## Blend mode activated

Here is a walkway design made of segmented monolithic concrete slabs finished with color hardener and epoxy. This walkways runs over an underground tank which has two manhole covers intersecting with the walkway.

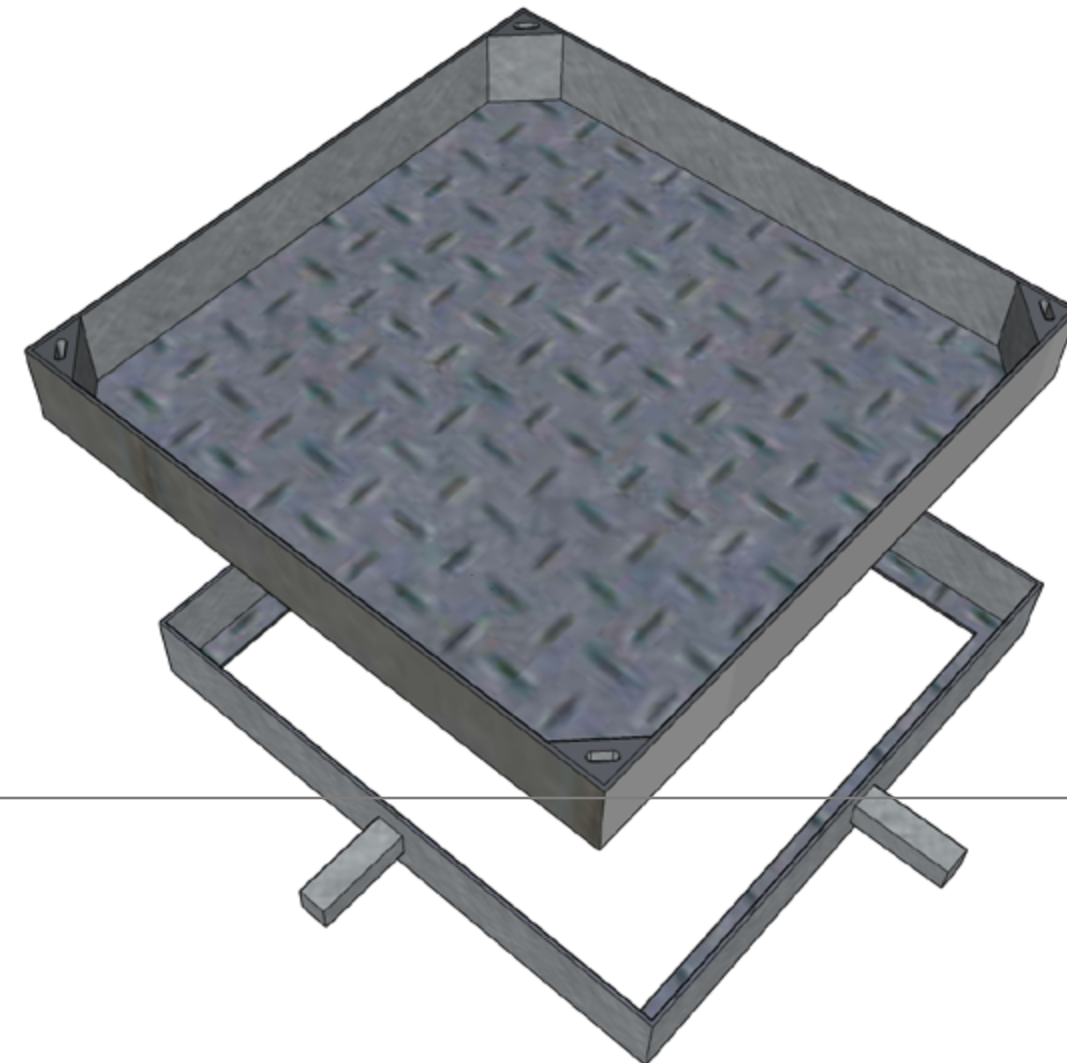
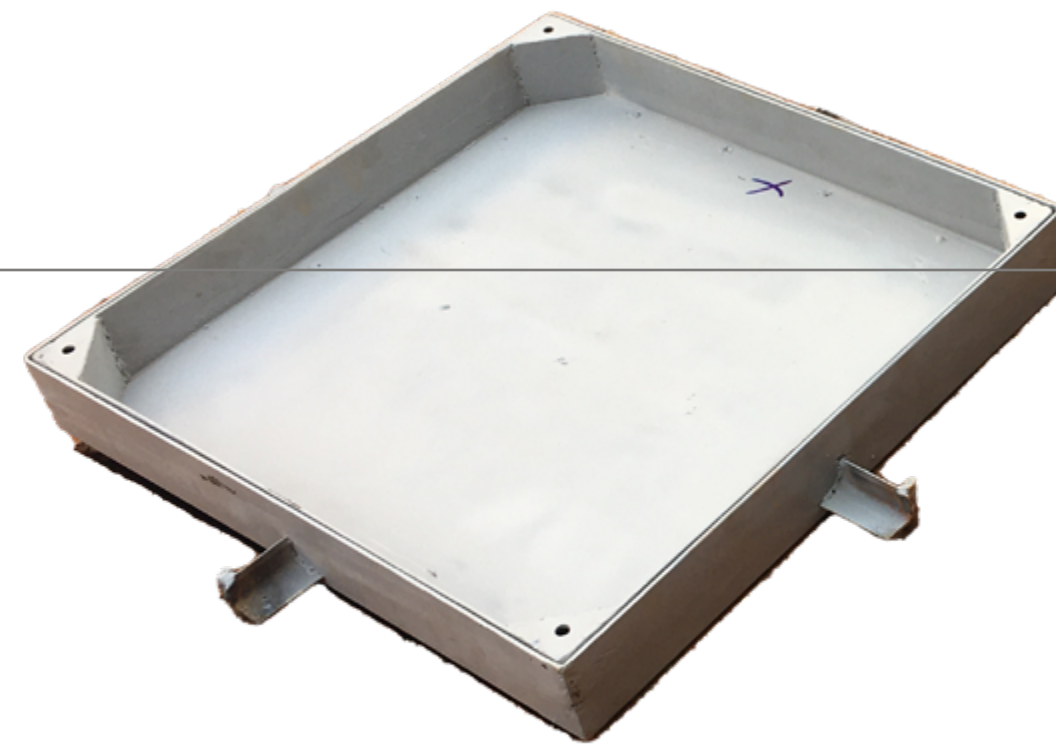




# Cover Design

## The model gets fabricated.

We design our models to the detail of vectorization. That's the minimum expectation from our partnering artisans and fabricators. We incorporate in some mild building information modeling to enable us envision exactly how our final product will turn out. We employed the best technologies in the industry from Autodesk, chaos group, SketchUp and RIB GmbH to build the best BIM and renders. We are able to simulate a lot of the movements of the model even without investing too much on physical real life tests.

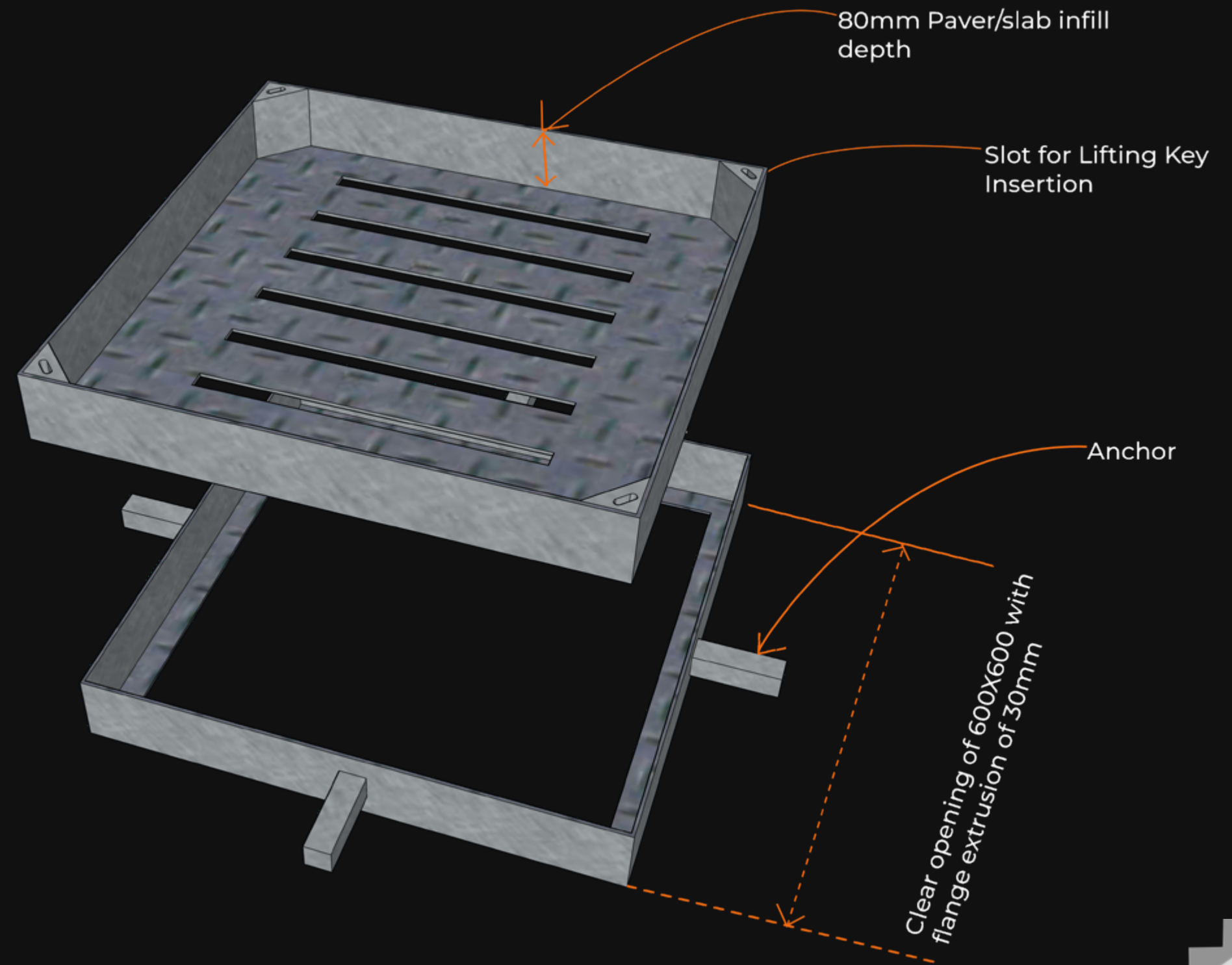


# There's a detail to it

This cover has got room for any infill. This infill is what gives it the capability to blend or camouflage with any surroundings. Whether it's in gravel, walkways, pavers or turf; it will take on its surroundings. Because of such a facade, the cover does not have any visible handles and it is intended to be like that. Instead, you have key holes in which you insert special keys to help you eject the cover out of the frame during times for inspection.

The frame is built with a robust flange which is the main source of structural strength. The cover is built with heavy gauge steel plate that can be grated depending on the use case.

The fun part is we've got this in many other variants of design. The color and protection can be done using paint or powder coating.



# Outdoor Steel Furniture



Outdoor, chairs, benches, tables, coffee sets, inground trampolines...

Outdoor spaces are built for relaxation. Can't imagine how to relax without complementary dedicated furniture. If you need something robust, then steel is our answer. We customise them to fit the whole design language of the outspace. As for the color, plascon has gone a long way with an infinite of color mixing. You can basically mimic anything in nature.

We've worked with ...

As part of our Impact Framework, we engage with leading industry manufacturers and built environment organisations to delivery the best unique products the break the off-the-shelf barrier in outdoor living and landscaping. We have affiliated or worked with...

**KWAGALA ARTS  
UGANDA**



**INCISE**  
A LIFE FULL OF DESIGN SECRETS

**STONE**  
PROVIDERS LTD