

Landscaping & Outdoor Living Designs

For Selected Works



Ideal Ville
LANDSCAPING



REPUTATION BUILT ONE YARD AT A TIME

PROJECTS
PORTFOLIO
2024



LAWN MAINTENANCE

“Zimbabwe” grass is a hugely flattering type of grass. It punishes for mistakes of poor maintenance, But it's happy to indulge your beauty ego.



Highlights

This was a property of three two units each with it's own landscape rehabilitation. A property of over 20 years finally got an new outdoor face with new features. New lighting features for night ambience rather than vision. Replacement of old cobble stone with vibrated concrete pavers and a slate mansonry driveway in another unit. New unique staggerd walkways made of roughed granite and slabs and and river stone pebbles replaced the old mass concrete walkways. The boundary wall was given a flora screen of bougainvillea and palms. Lastly, was "Zimbabwe" grassing by nusery sods. Find more imagery on it on our instagram page. @idealville_landscaping <https://www.instagram.com/p/CtpaB0z0QeW/>



Project Delivery:
Design & Build

Status:
Complete

Client:
Private

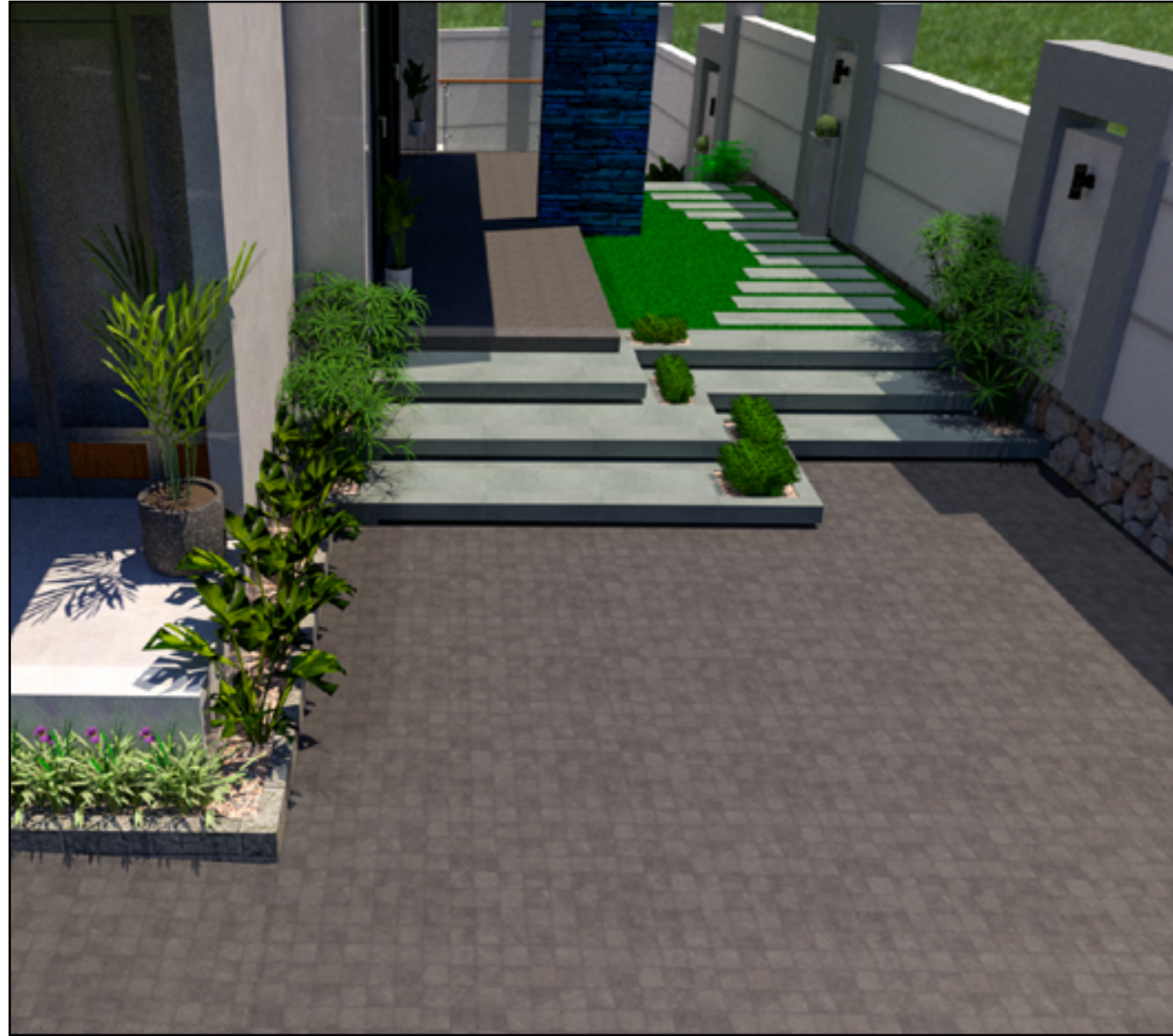
Budget:
56 million

Concept & Idea

Stepping stone granolithic walkway in the backyard a long with a simple turf and slab patio for outdoor dining. Installing a custom traffic circle and center piece with a recessed underside to accomodate strip lighting and then a general basket weave pattern for the paving.

MAWANDA ROAD residential





KIRINYA

Behemoth Residential

HIGHLIGHTS

The landscape design encompasses three distinct levels: the front yard at the porch, the basement courtyard, driveway & parking lot. This project utilizes a diverse array of materials, blending both unique and traditional elements. For instance, we incorporate Microteck flooring for the staggered slabs and a composite of both reinforced concrete & interlocking paver floating stairs, along with a powder-coated steel gazebo. Additionally, we apply micro-topping to the boundary wall, which will feature stunning lighting effects. Our design also includes dedicated outdoor fixtures, fittings, and ornaments, many of which are customized specifically for this project. For more https://www.instagram.com/reel/C3-E6OpL2gJ/?utm_source=ig_web_copy_link&igsh=MzRIODBiNWFIZA==



Project Delivery:
Design & Build

Status
60%; Boundary wall,
Floating Stairs & drainage

Client:
Private

Concept & Idea

Simple outdoor feature designs but with carefully picked material choices for every element. These include; microtopping floor finishes for the rooftop living, microteck charcaol finish for the segmented slabs, porcelain tiles for the floating stair steps, fibre glass planters, mermoran coated planters . etc

KITENDE LUMULI

residential

HIGHLIGHTS

The highlight of this landscape canvas was on the front porch which also doubled as a patio shedded with a steel pergola. A long the porch up to the rear door exit was our generic slab in stone walkway with invisible pvc edging to separate it from the turf. The patio was finished with artificial

turf while the lawn was installed using nursery sods of "Zimbabwe grass." FindtherestoftheimageryonthisKitende project on our Instagram Page on <https://www.instagram.com/p/Ct9d9fRt4eD/>



Project Delivery:
Design & Build

Status:
Complete

Client:
Private

Budget:
15 million

Concept & Idea

Despite its compact size of just 150 sq meters of compound space, this project at Ideal Ville presented a unique opportunity for transformation. Over the years, we've discovered that small spaces offer the greatest flexibility in design. Our innovative concept for this project involved removing unsightly manholes and septic tanks from the landscape, as these features can detract from the beauty of small spaces. The result was a stunning transformation that truly maximized the potential of this small space.

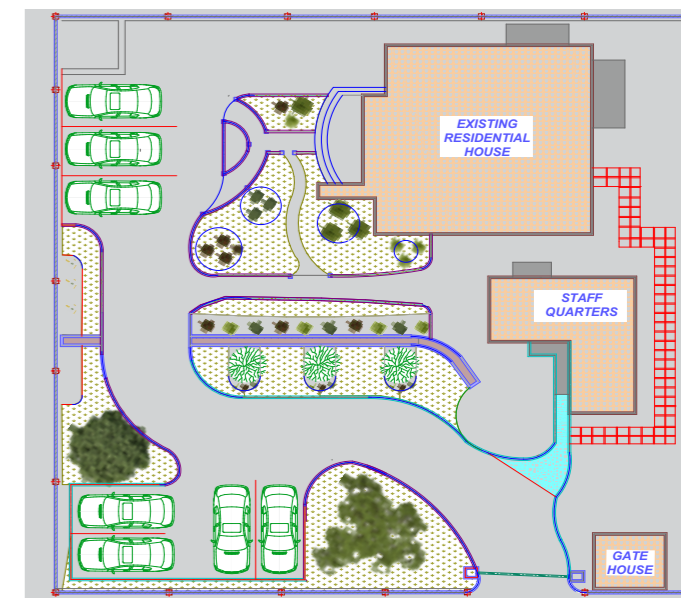


KASANGATI behemoth

HIGHLIGHTS

This was the most comprehensive project of 2023 that saw us go to the lengths of road engineering. Our canvas was originally a very steep sloping was divided into two ground levels separated by a natural stone mass retaining wall. It had four main sections; The Front yard & Lot & Backyard & Back alley, Laundry Porch, driveway & subsistence farming garden. This site had a very high-water table and required various techniques of dewatering and as well as a well-engineered road formation for the driveway. The backyard and front center piece were undoubtedly the most eye-catching unique features of this project that introduced our signature insitu walkway design for the very first time and a simple patio. This portfolio piece encapsulates not just a project, but a saga of innovation, a testament to the fusion of vision and craftsmanship that defines our journey through the world of design and construction.

Find more imagery on it on our instagram page. @idealville_landscaping <https://www.instagram.com/p/CtpaBOz00eW/>



Project Delivery:
Design & Build

Status:
Complete

Client:
Private

Budget:
175 million

Concept & Idea

Stepping stone granolithic walkway in the backyard a long with a simple turf and slab patio for outdoor dining. Installing a custom traffic circle and center piece with a recessed underside to accomodate strip lighting and then a general basket weave pattern for the paving.





HIGHLIGHTS

Another landscaped area with a multi-level canvas. A very steep sloping driveway leading to a low-lying parking lot and subsidiary lawn that's big enough to fit all your gardening ambitions. It doesn't end there though; the parking lot then leads to an elevated canvas with the main house and main lawn space. On this platform, our staggered walkway strikes again here but not with the monochrome colors this time. In the end it turns out to be a minimalistic outdoor design. Find more imagery about this property on our Instagram page. @idealville_landscaping <https://www.instagram.com/p/CtpaB0z0QeW/>



Project Delivery:
Design & Build

Status:
Complete

Client:
Private

Budget:
78 million

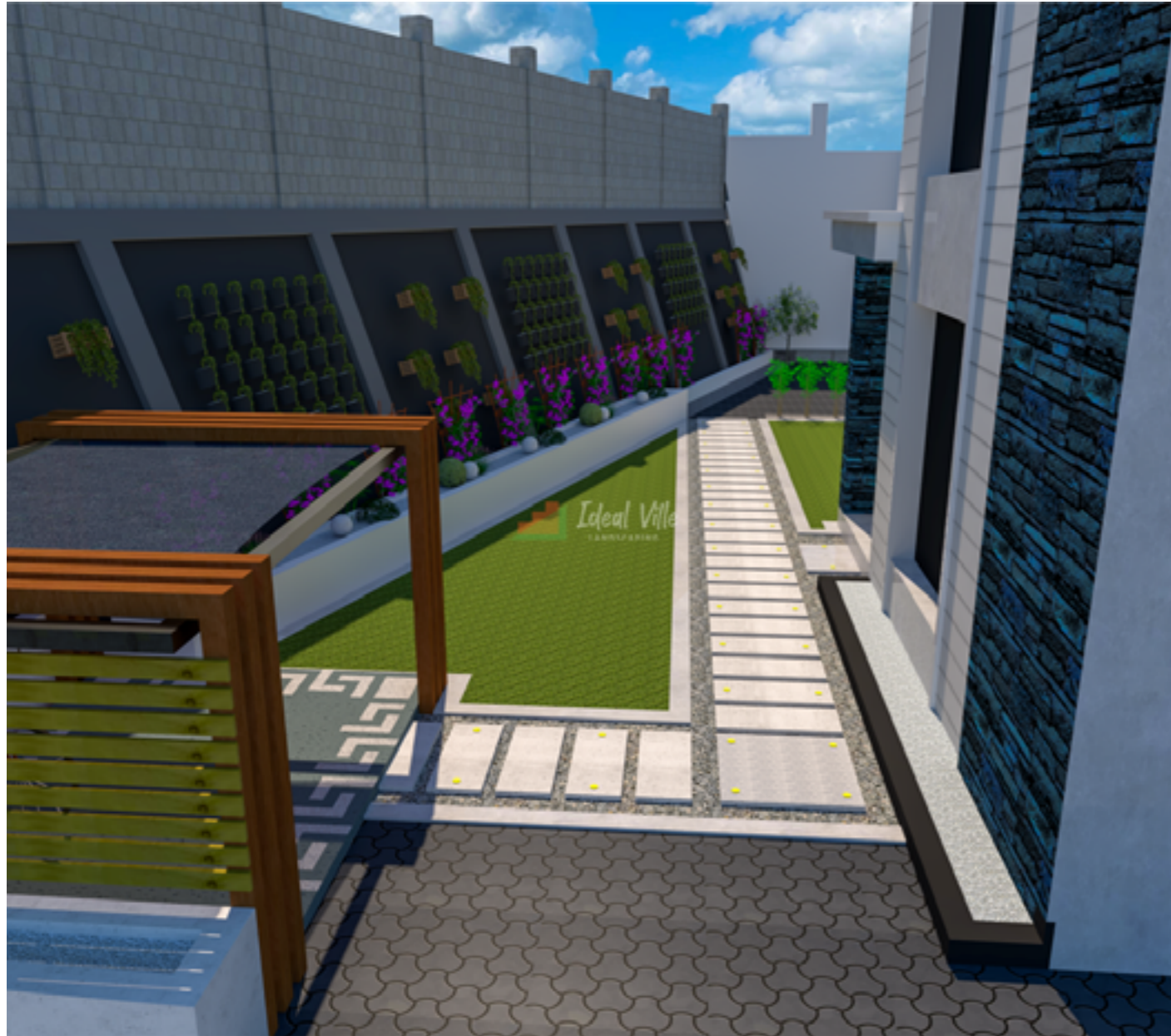
Concept & Idea

Creating a flat plane from the steep slope to accommodate parking lot and subsidiary lawn space. Elevating main outdoor space flush with main entrance and above basement so as to house walkways and hammocks.

BULINDO ESTATE

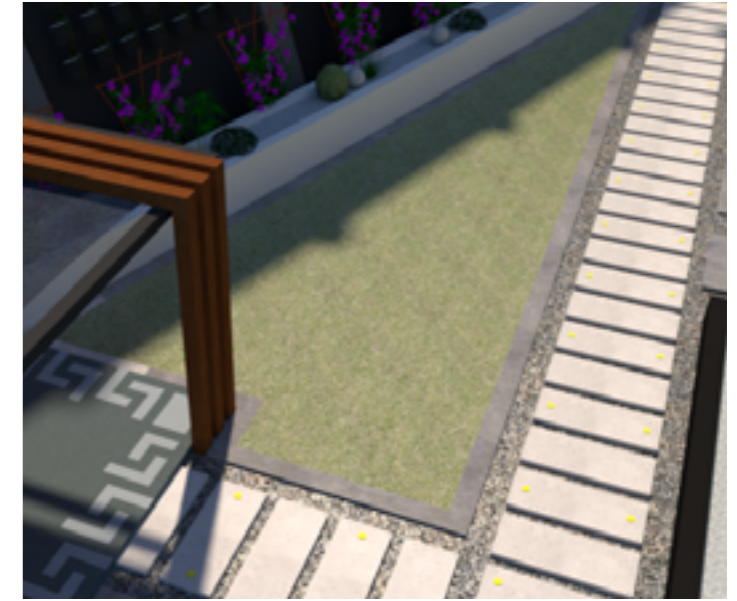
residential





HIGHLIGHTS

A brilliant canvas spatially designed from the building's contemporary industrial design philosophy. The building had a limited outdoor space for relaxation and group hostings. So we worked with the architects to remodel the top slab into an outdoor rooftop lounge. with a dedicated kitchen, jacuzzi, bar and more. We kept consistent with the groove wall facades of the building and you can see that inspiration carry on to the walkways. Interior design's exposed I-beams and rafters carries on to the outside on the patio specifically painted to mimic rust on metals. Find more imagery about this property and how it comes along on our Instagram page. @idealville_landscaping https://www.instagram.com/reel/C3-E6OpL2gJ/?utm_source=ig_web_copy_link&igsh=MzRIODBiNWFIZA==



Project Delivery: Design & Build

Status
75%

Client:
Private

Concept & Idea

A residential AirBNB dedicated villa. Because it aims at housing vacations and group gatherings/ accommodations, a thoroughly designed outdoor space is a must, says the super host who contracted us. At only 250 sqm of outdoor site space means little room for functional features but we have a solution for it.



MUTUNGO

AirBnB

MEGO BELANIA Apartments

HIGHLIGHTS

From a regular paved lot, we kicked off with giving the wall fence a unique rendering design without conflicting the apartments wall render. And then a unique mamoran design for gate canopy and columns. A couple of planters along the wall both outside and inside to wind up with this behemoth of 1500 sqm parking lot. Find the rest of the im-

agery on this apartments project on our Instagram Page via link <https://www.instagram.com/p/CWynOIJLZR4/>



Project Delivery:
Design & Build

Status:
Complete

Client:
Private

Budget:
61 million

Concept & Idea

A two block Apartment property. The requirement here was to make plain parking space with industrial grade interlocking pavers no questions asked. And we did just that. All the rest would be bonus designs but we definitely had to add something.

NABUSUGWE residential 1stPhase

HIGHLIGHTS

It is easy to get salty about how ordinary this parking lot looks but that was the job and we got it done. We managed to get away with installing crushed stone inlays highlighted with nighttime roadway Cat Eyes” This canvas then leads to the first floor of the house from the back. It gets interesting in the future with the second

phase in the works as we anticiapate for *showstopper* front section main landscape design. Find the rest of the imagery on this Nabusugwe project on our Instagram Page via link <https://www.instagram.com/p/CWynOIJLZR4/>



**Project Delivery:
Design & Build**

Status:
Complete

Client:
Private

Budget:
86 million

Concept & Idea

The goal was clear; to make a back yard parking space strictly functional with no funny business. The result, was literal, installing the famed herring bone pavement.

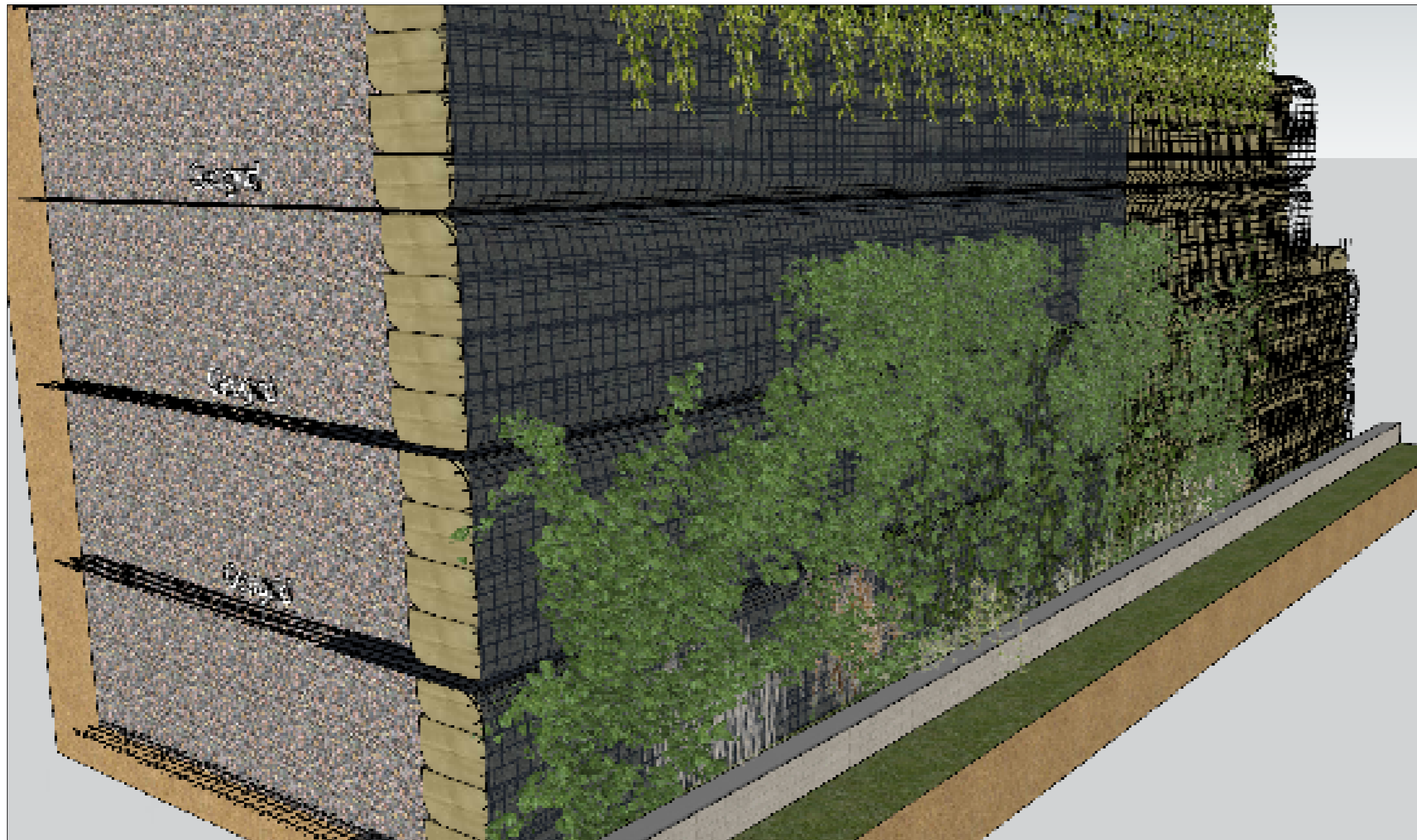
This project as well included a 150m long road formation grading and installation of road drainage and ramp access.

NAKAWA Geogrid living wall

HIGHLIGHTS

The project involves constructing an impressive 10m high, running 150m retaining wall with an 85-degree angle, utilizing a geogrid wrap-around, reinforced earth, and erosion control geotextile. Biodegradable bags will be used for the wall's face. Due to the specific botanical nature of the carefully curated planting scheme, the wall will feature strategically placed wall-mounted terraces that will showcase a variety of cascading plants, wall creepers, and mini shrubs, enhancing its aesthetic appeal and creating a sense of depth and texture. The lighting alone will be quite

the spectacle. A carefully planned system that will transform the horizon view of this canvas, creating a warm and inviting atmosphere that will captivate visitors and passersby alike. This innovative approach not only provides essential structural support but also seamlessly integrates nature into the built environment, creating a visually stunning and environmentally friendly feature that will serve as a testament to the power of thoughtful and sustainable landscape design. Follow more on instagram. @idealville_landscaping



Project Delivery:
Design 'n build subcontract

Status:
Design

Client:
Sub-Contract

Concept & Idea

A wrap-around geogrid reinforced wall camouflaged with assorted green cover and intricate lighting schemes.



KAWANDA

Tissue Culture Laboratory at NARL
Mechanical Stabilisation & weed control in pavers.

HIGHLIGHTS

We've partnered with Tetra Build Services on their completion of a previously abandoned laboratory construction in Kawanda by offering Landscaping services. The Scope of works consisted of a reworks on existing flexible pavement made of interlocking pavers by mechanically stabilizing the profile with non-woven heavy duty geotextile fabric and stone base and ultimately providing a lasting vegetation barrier for the pavers. Furthermore, we were tasked with revamping the front yard with new soft landscape plants and turf. Find more @idealville_landscaping https://www.instagram.com/reel/C3-E6OpL2gJ/?utm_source=ig_web_copy_link&igsh=MzRIODBiNWFIZA==



Project Delivery:
Design & Build

Status
Complete

Client:
Sub-Contract

Concept & Idea

Mecahnical stabilization of existing interlocking pavers as well as a lasting vegetation growth control within the pavers. And a mild revamp of the soft landscape of the front yard.

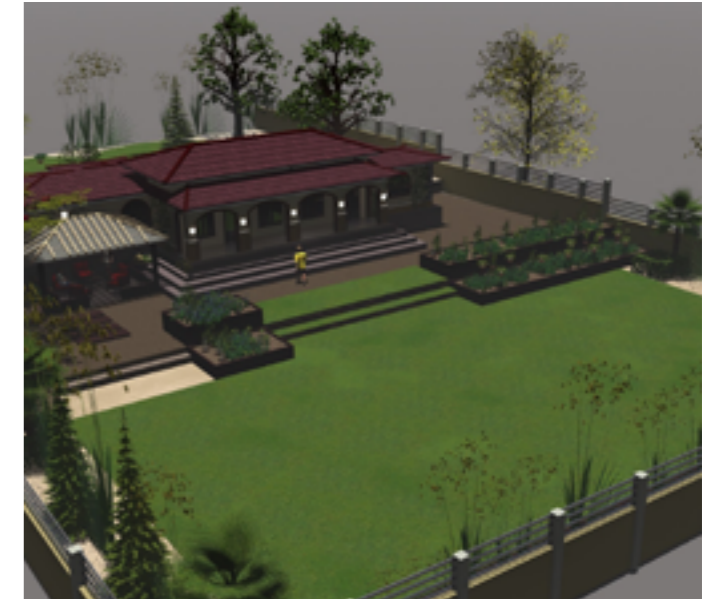


KYABAKADDE

Farm/Country Home

HIGHLIGHTS

We've partnered with wankonko gardeners to import, plant and maintain a high breed carpet grass from south africa. A special variant of Bermuda grass. The landscape is to be built on a two level canvas matching a forest farm house style with mediterranean highlights. Rock gardens and a special sand fill that match a mediterranean fill were chosen. The pine trees are consistent with the forest feel. How about a stamped concrete driveway microtopped with granite color hardener. Find more imagery about this property and how it comes along on our Instagram page. @idealville_landscaping https://www.instagram.com/reel/C3-E6OpL2gJ/?utm_source=ig_web_copy_link&igsh=MzRIODBiNWFIZA==



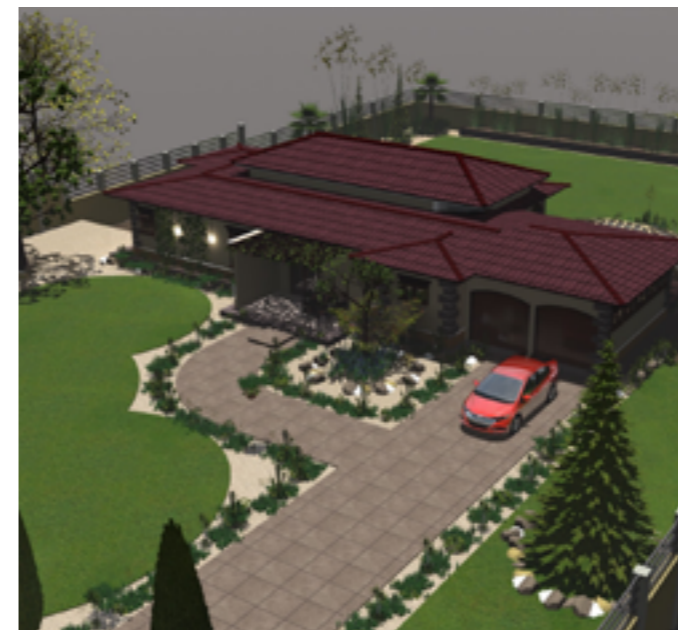
Project Delivery:
Design & Build

Status
Design

Client:
Private

Concept & Idea

A residential country side home in the middle of a 35 acre farm. The name of the game is green and camouflaging with the crops and livestock.





HIGHLIGHTS

We have teamed up with exceptional gardeners who are well-acquainted with our vision to deliver an innovative project focused on vertical and multi-story subsistence gardening. This initiative goes beyond traditional greenhouse gardening; it serves as both a recreational space and a productive vegetable garden, yielding an impressive 1,200 kilograms of vegetables per week. This output is more than sufficient for subsistence farming, especially in a commercial context. While it may seem ironic, the design will also feature a neo-colonial style masonry boundary wall that complements the surrounding structures, including an outdoor kitchen and an unshaded dining area. This harmonious blend of functionality and aesthetics promises to create a unique and inviting environment. Find more imagery about this property and how it comes along on our Instagram page. @idealville_landscaping https://www.instagram.com/reel/C3-E6OpL2gJ/?utm_source=ig_web_copy_link&igsh=MzRIODBiNWFIZA==



Project Delivery: Design & Build

Status
20%

Client:
Private

Concept & Idea

A residential country side home in the middle of a commercial farm. The name of the game is gardening and outdoor living. We did just that.

NAKASEKE

Farm Home



NSASA Residential

HIGHLIGHTS

The zoning ordinance design constraints included specific requirements for the drainage plan pertaining to both the building and the site, particularly concerning storm water management. To address these requirements, we will incorporate over 20 inspection chambers throughout the property, utilizing custom-designed manhole covers crafted by our industrial design studio. These covers will be discreetly integrated into the landscape, ensuring they remain out of sight from the compound's main view.

Our hardscape design embraces a geometric theme, creating a modern and visually striking environment. Additionally, we are excited to introduce an orchard within the compound, enhancing both the aesthetic and functional aspects of the space.

A standout feature of the design will be the staggered walkway, constructed from monolithic concrete with a color hardener, adding both durability and visual interest to the outdoor areas. Find more on our Instagram



Project Delivery:
Design & Consultancy

Status:
Design

Client:
Private

Concept & Idea

A gated community with zoning ordinances means you have to adhere to the design constraints as a landscaper. Nonetheless, we have come up with a unique staggered walkway, orchard layout and gazebo for this project.

OMBRÉ

“

having tones of colour that shade into each other, graduating from LIGHT to DARK

”

Step out of the common multi-colored paving patterns. get our paving patterns that speak a language.